

PARCEL MAP N° 36-5

IN THE UNINCORPORATED TERRITORY OF  
THE COUNTY OF MONO, STATE OF CALIFORNIA,  
BEING A DIVISION OF PARCELS 17 AND 18 AS  
SHOWN ON THE ASSESSMENT DISTRICT MAP  
RECORDED IN BOOK 1, PAGE 2-A OF ASSESSMENT  
MAPS, RECORDS OF MONO COUNTY.

ONE SHEET ONLY  
No. 650

Filed for record this 4<sup>th</sup> day  
of August, 1971, at  
11:15 A. M. in Book 7 of  
Maps at Page 42 at the  
request of Gordon C. Holmes.

Ann M. Stebb  
County Recorder

This map was prepared by me or under my direction and is based upon a field survey in conformance with the requirements of the "Subdivision Map Act" at the request of Mr. C.R. MacColm in July, 1971. I hereby certify that it conforms with the approved tentative map and the conditions of approval thereof; that all provisions of applicable state law and local ordinances have been complied with.

Gordon C. Holmes  
Gordon C. Holmes RCE 10467

I hereby certify that this land division map was approved by the Mono County Planning Commission on the 13<sup>th</sup> day of July, 1971.

Planning Commission Chairman

This map has been examined this 30<sup>th</sup> day of July, 1971, for conformance with the requirements of Section 11575 of the ~~California~~ Map Act.

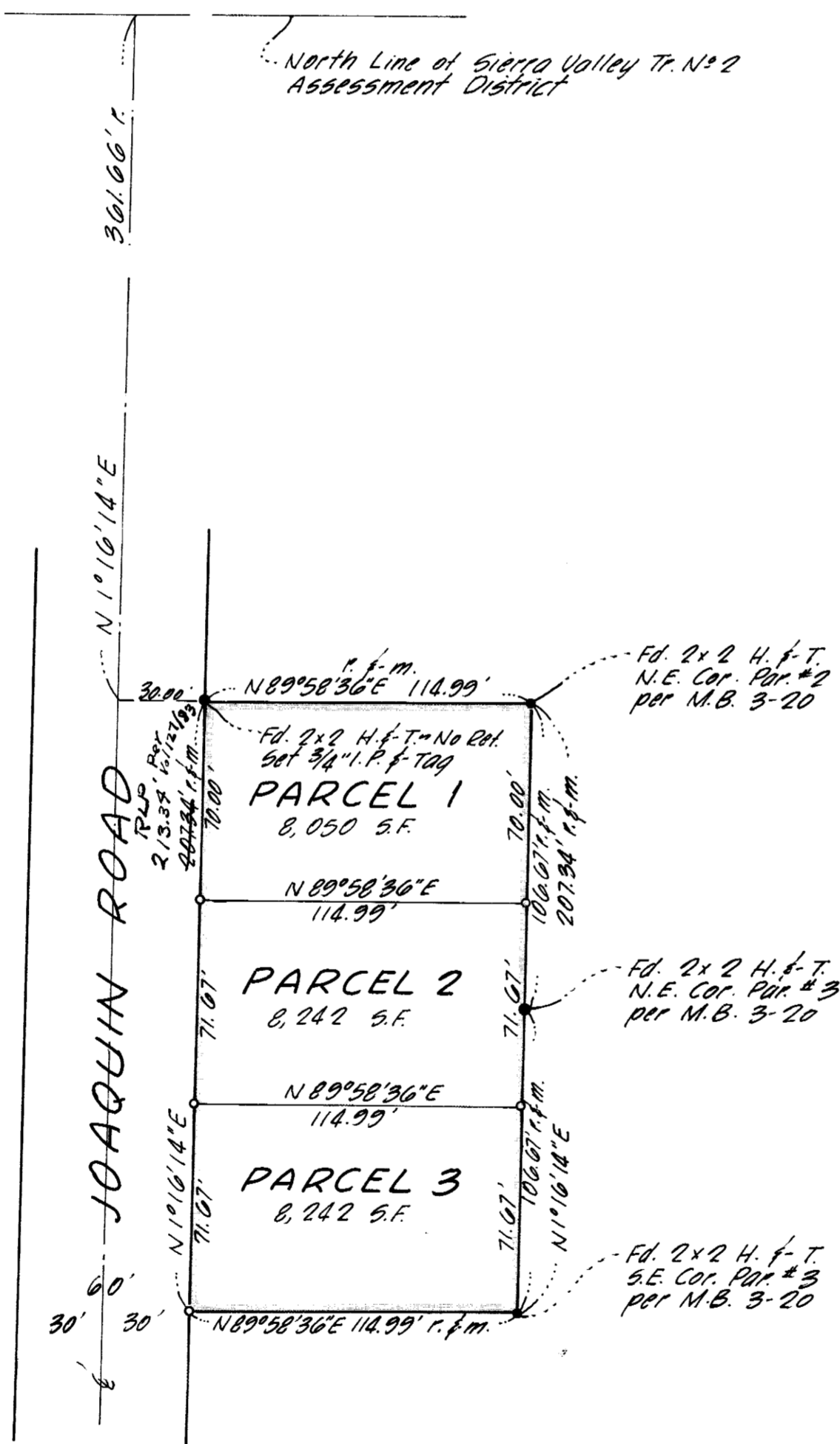
REGISTERED  
RICHARD L. POOL  
No. 18,000  
*Richard L. Pool, P.E.*  
County Surveyor

bearing of  $N 1^{\circ} 16' 14'' E$  of the east line of Parcels 17 & 18 per Book 1, Page 2-A of Assessment Maps was used as the basis of bearing shown on this map.

- Indicates a found point as noted.
- Indicates a 3/4" I.P. f- Tag set.

$r = \text{record}$   
 $m = \text{measured}$

Record information is from M.B. 3-20 and Book 1, Page 2-A of Assessment Maps



Vol. 7 Page 42