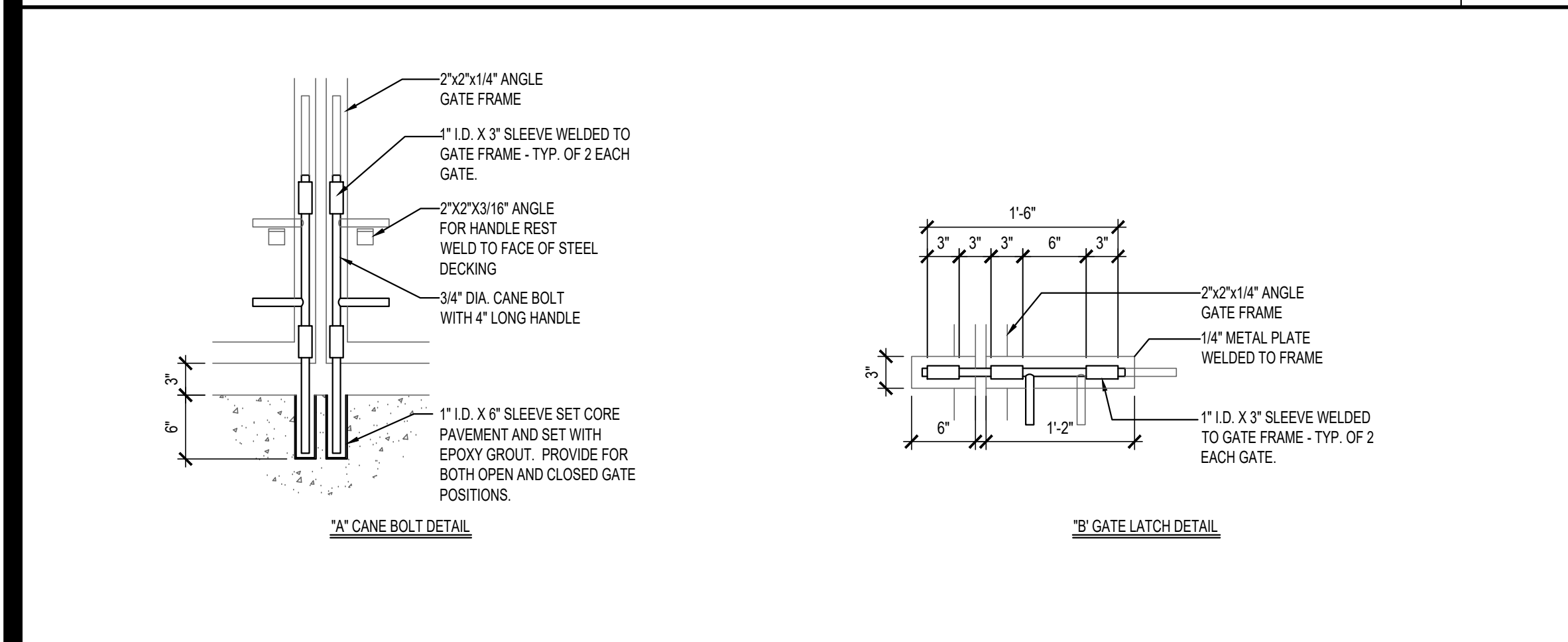


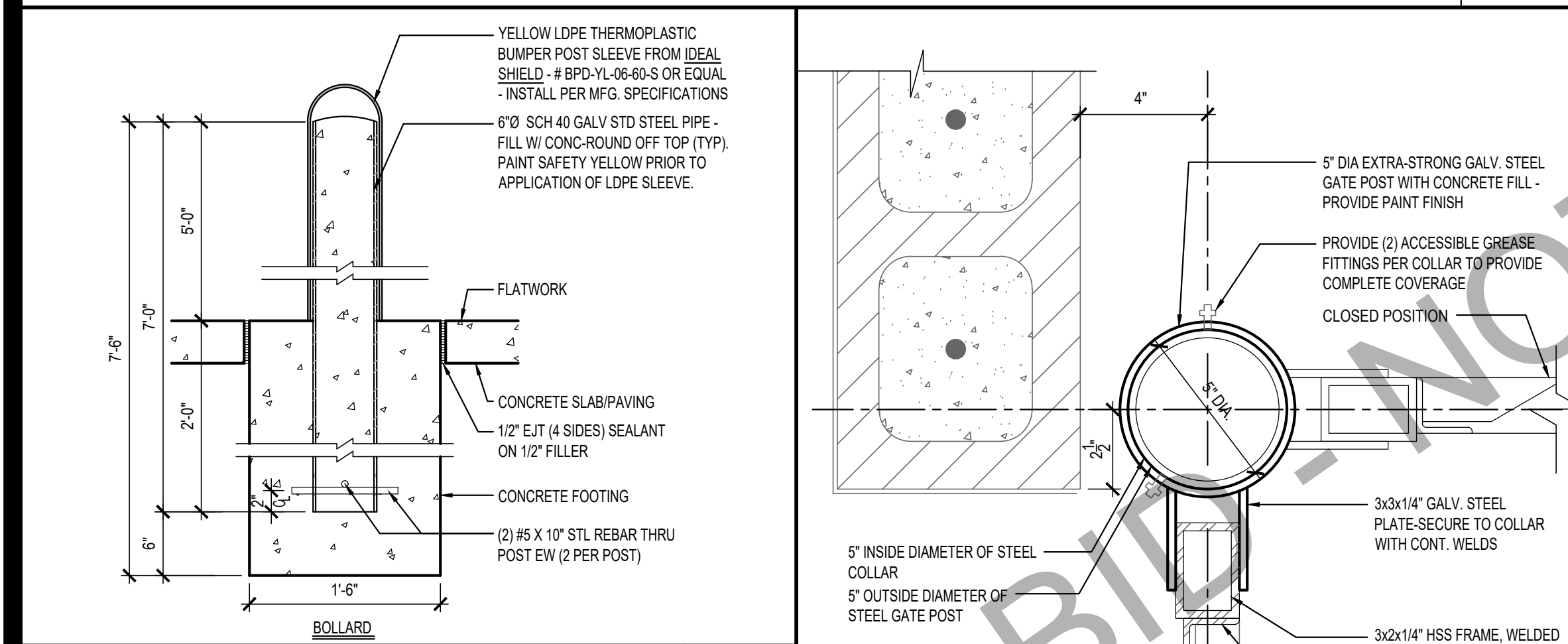
"COMING SOON" SIGN DETAIL 16

Scale= 1/4" = 1'-0" A-407



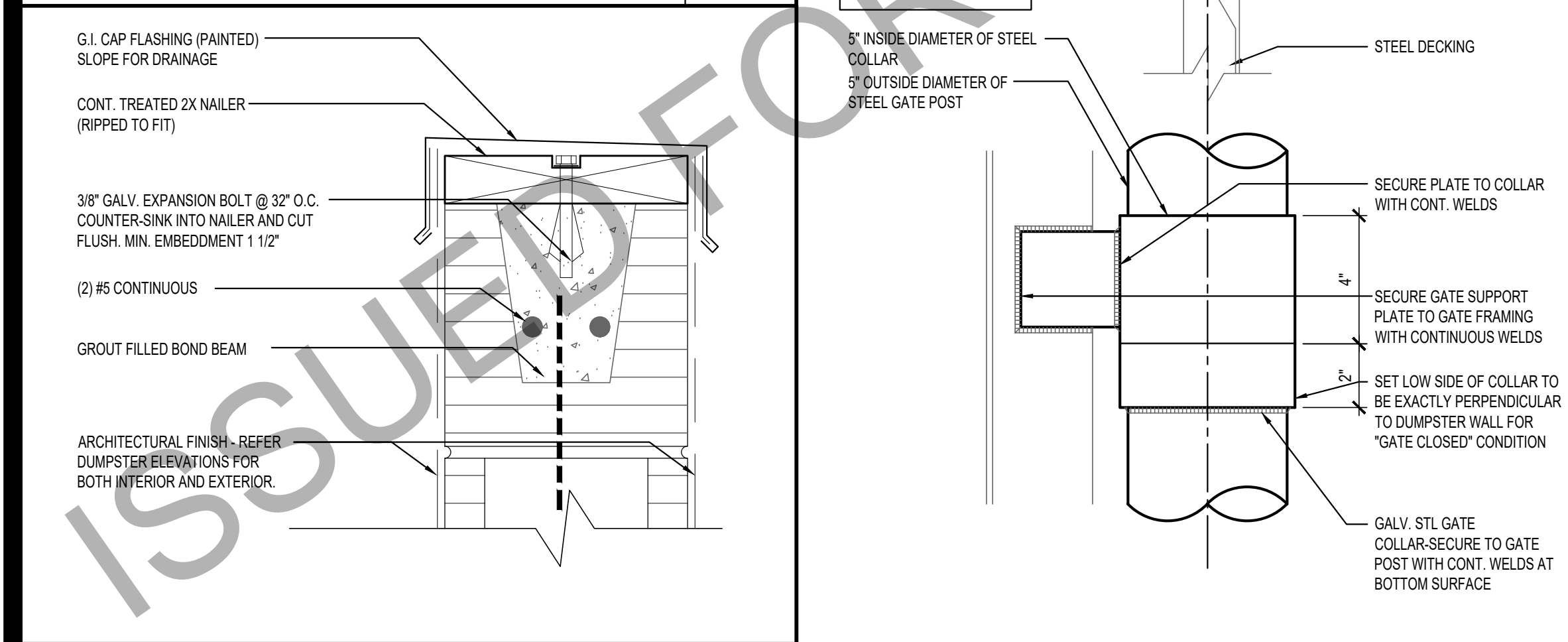
DUMPSTER GATE LATCH DETAILS 15

Scale= NTS A-407



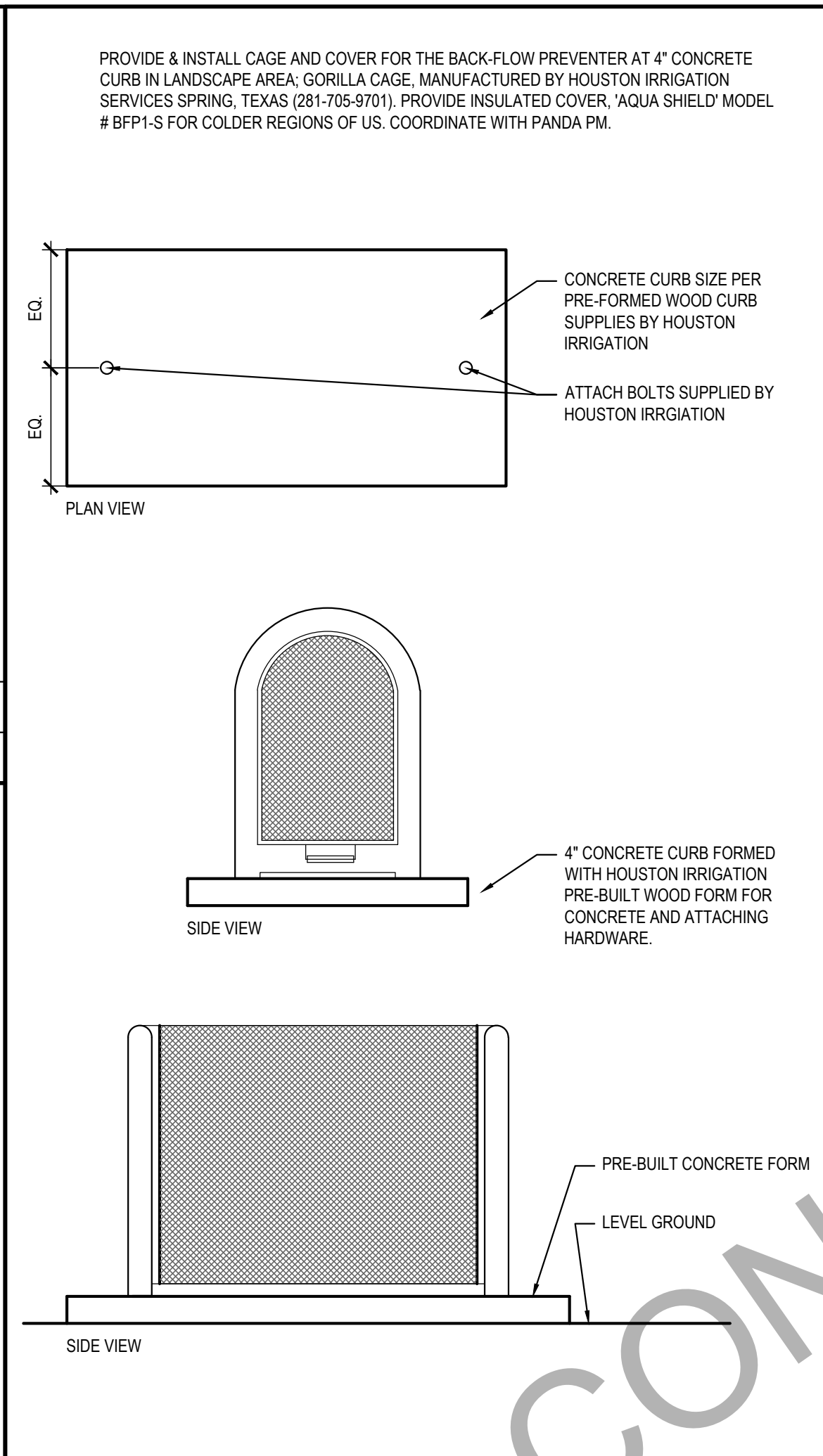
BOLLARD / POST BASE 18

Scale= 1" = 1'-0" A-407



DUMPSTER CAP DETAIL 17

Scale= 3" = 1'-0" A-407



BACKFLOW PROTECTION CAGE 11

Scale= NTS A-407



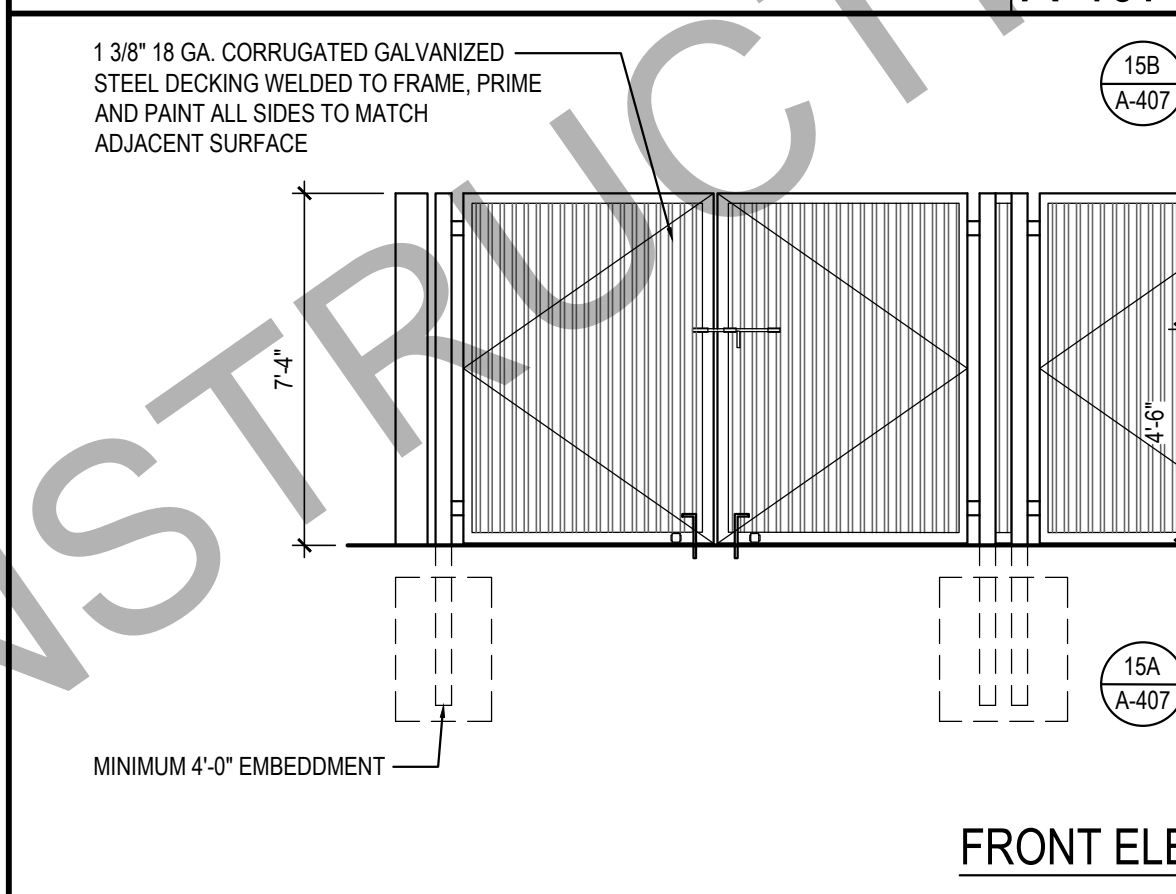
HINGE DETAIL 13

Scale= 3" = 1'-0" A-407



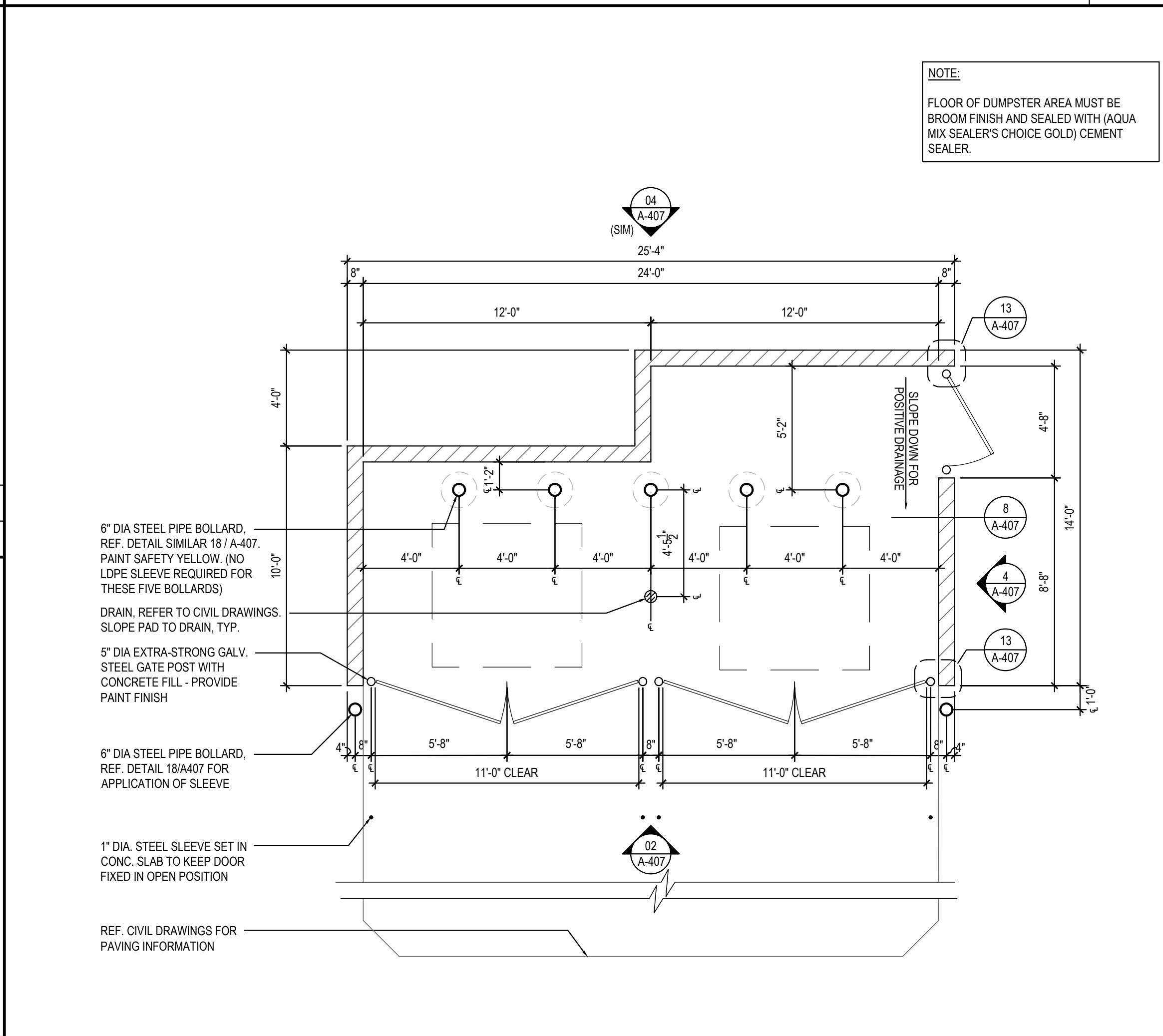
TRASH ENCLOSURE WALL SECTION 8

Scale= 1/2" = 1'-0" A-407



FRONT ELEVATION 2

Scale= 1/4" = 1'-0" A-407



TRASH ENCLOSURE 1

Scale= 1/4" = 1'-0" A-407



PANDA RESTAURANT GROUP INC.
1683 Walnut Grove Ave.
Rosemead, California
91770
Telephone: 626.799.9898
Facsimile: 626.372.8288

All ideas, designs, arrangement and plans indicated or represented by this drawing are the property of Panda Express Inc. and were created for use on this specific project. None of these ideas, designs, arrangements or plans may be used by or disclosed to any person, firm, or corporation without the written permission of Panda Express Inc.

REVISIONS:

ISSUE DATE:

1 03.04.2022 ISSUE FOR PERMIT

DRAWN BY: JDV

PANDA PROJECT #: S8-22-D8698
C&P PROJECT #: 2210806

CUHACI PETERSON
2600 Maitland Center Parkway
Suite #200
Maitland, FL 32751
P (407) 661-9100
F (407) 661-9101
c-p.com

03.04.2022



PANDA EXPRESS
TRUE WARM AND WELCOME 2200
3030 DERITA ROAD
CONCORD, NC 28027

A-407

TRASH ENCLOSURE
DETAILS

TRUE WARM & WELCOME 2200 R4