

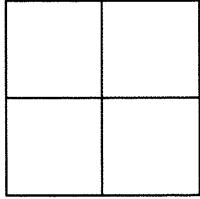
CORNER RECORD

Agency Index _____

Document Number CR 10060City of BERKELEYCounty of ALAMEDA, CaliforniaBrief Legal Description 2" BRASS DISK MONUMENT LOCATED WITHIN BRET HARTE ROAD
IN BACK OF 1119 CRAGMONT AVE.

CORNER TYPE

COORDINATES (Optional)



Government Corner ☐ Control ☒
 Meander ☐ Property ☐
 Rancho ☐ Other ☐

Date of Survey 5/11/17

N. _____ E. _____

Elevation _____

Units Metric ☐ U.S. Survey Foot ☒

Horizontal Datum _____

Zone _____ Epoch Date _____

Vertical Datum _____

☐ Complies with Public Resources Code §§8801-8819☐ Complies with Public Resources Code §§8890-8902PLS Act Ref: ☐ 8765(d) ☒ 8771 ☐ 8773 ☐ Other: _____

Corner/Monument: ☒ Left as found ☐ Established ☐ Rebuilt ☒ Pre-Construction
☐ Found and tagged ☐ Reestablished ☐ Referenced ☐ Post-Construction

Narrative of corner identified and monument as found, set, reset, replaced, or removed:

☒ See sheet #2 for description(s) :

FOUND 2" BRASS DISK AND PUNCH. CITY ID B1718.

FOUND AND SET POINTS AS SHOWN ON PAGE 2.

THIS POINT WAS REFERENCED PRIOR TO A CONSTRUCTION PROJECT IN THE VICINITY.

THE TIES SHOWN HEREON ARE FOR THE PURPOSE OF PERPETUATING FOUND MONUMENTATION.

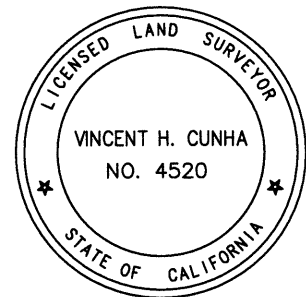
NO CLAIM IS MADE AS TO THE RELATIONSHIP OF THE POINTS OR LINES SHOWN HEREON TO TRUE BOUNDARY LOCATION.

SURVEYOR'S STATEMENT

This Corner Record was prepared by me or under my direction in conformance with

the Professional Land Surveyors' Act on MAY 19, 2017.Signed Vincent H. Cunha P.L.S. No. LS 4520

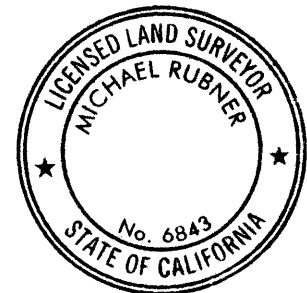
VINCENT H. CUNHA



COUNTY SURVEYOR'S STATEMENT

This Corner Record was received 1 JUNE, 2017and examined and filed 9 AUGUST, 2017.Signed Michael Rubner P.L.S. or R.G.E. No. 6843Title COUNTY SURVEYOR

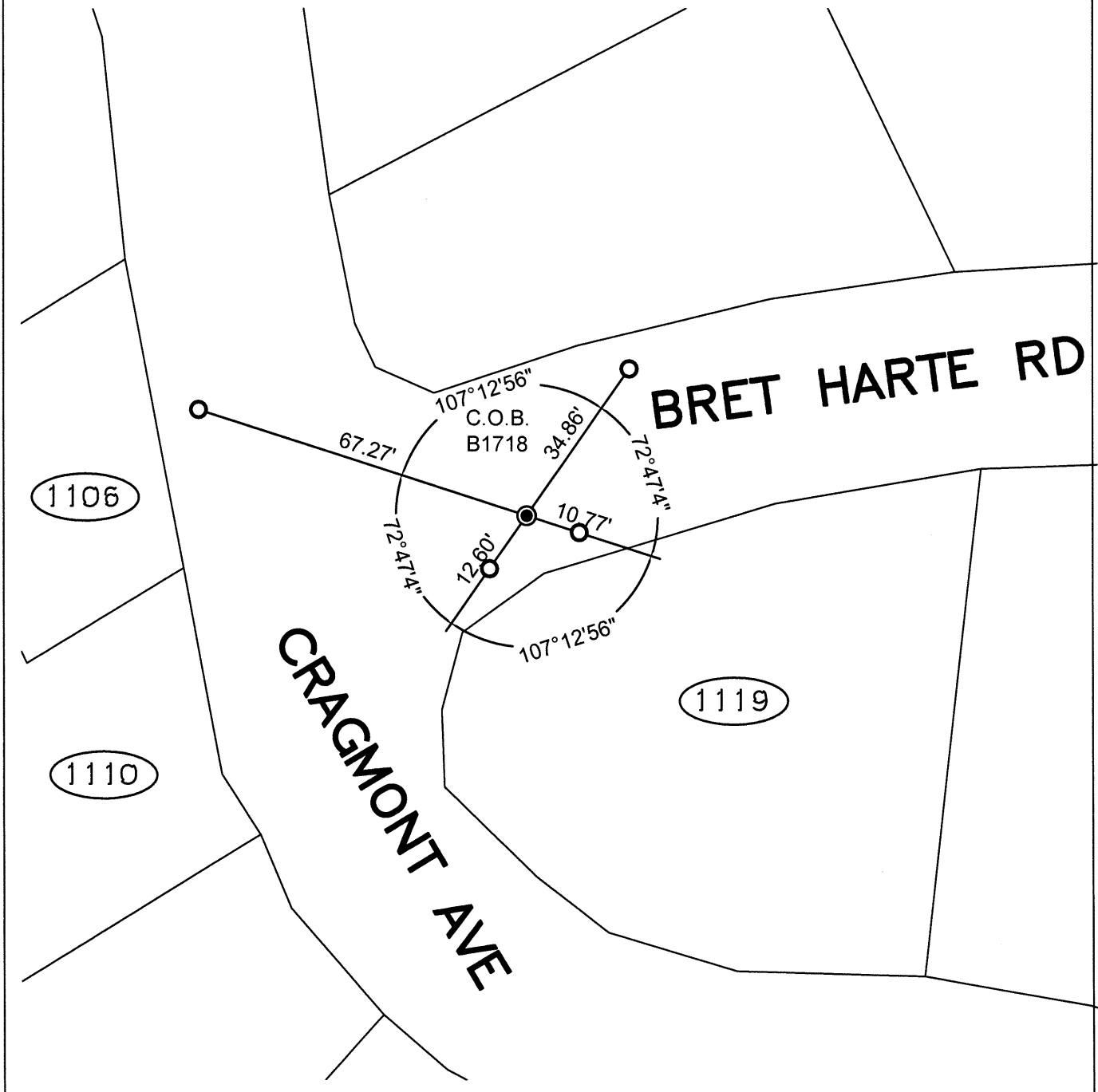
County Surveyor's Comment



SCALE: 1"=30'

LEGEND

- FOUND BRASS DISK WITH PUNCH IN MONUMENT WELL
- ⊗ SET CUT CROSS IN WALK
- ✕ SET CUT CROSS IN CURB
- ✕ SET MAG AND SHINER
- SET REBAR & CAP STAMPED "CEI RP"
- AA###A# ALAMEDA COUNTY MONUMENT ID
- 19592 REFERENCE STREET ADDRESS



216010-M-BRET HARTE-CR1