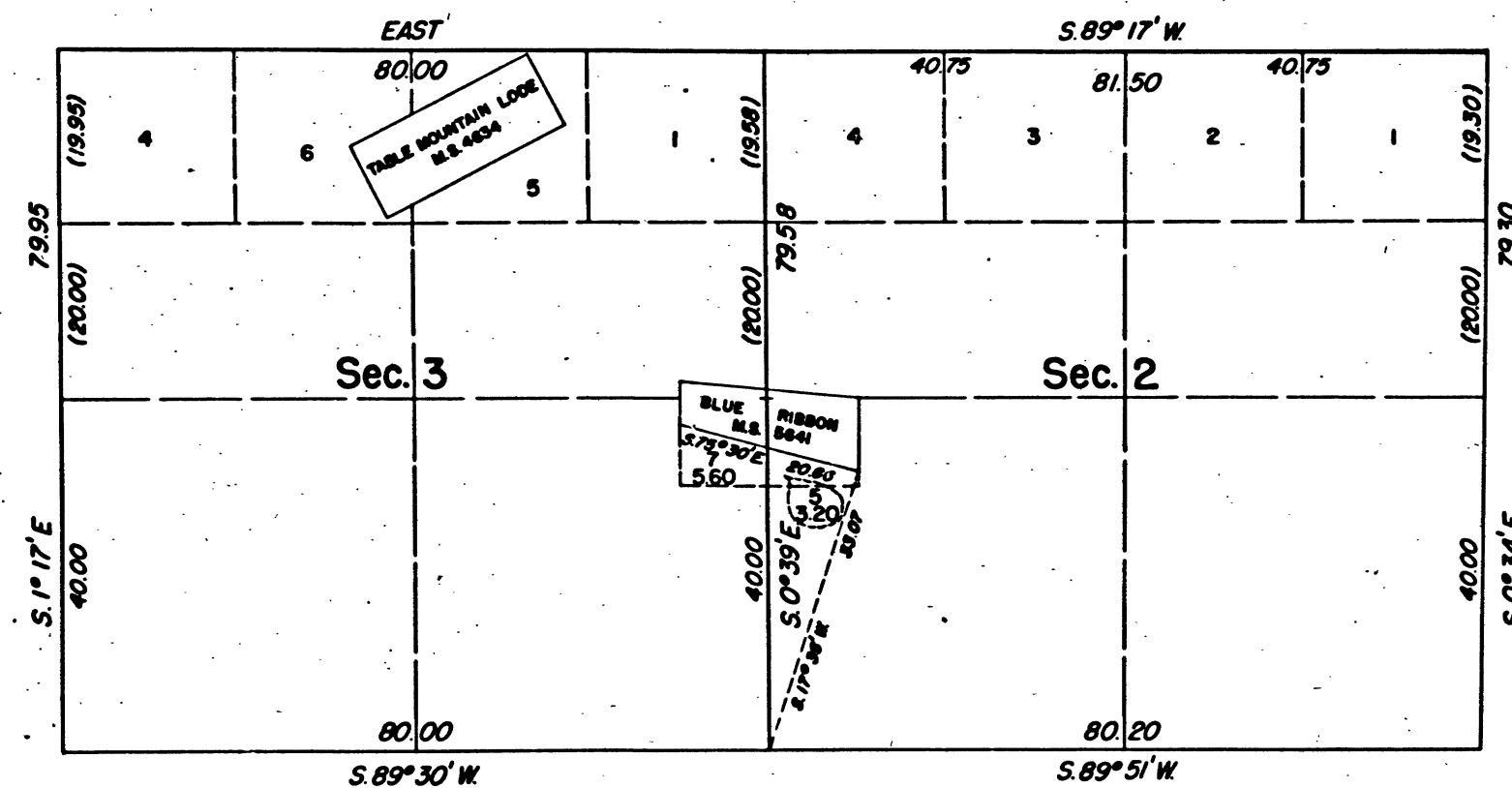
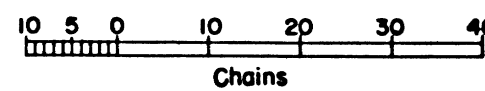


TOWNSHIP 4 NORTH, RANGE 13 EAST, OF THE MOUNT DIABLO MERIDIAN, CALIFORNIA.  
SUPPLEMENTAL PLAT OF SECTIONS 2 & 3



This supplemental plat, showing amended lottings resulting from the segregation of M. S. No. 5641, Blue Ribbon lode from the NW 1/4 sec. 2 and NE 1/4 sec. 3, T. 4 N., R. 13 E., Mount Diablo Meridian, California, is based upon the plats approved August 16, 1871, January 26, 1915, and mineral plat approved October 31, 1922.



UNITED STATES DEPARTMENT OF THE INTERIOR  
BUREAU OF LAND MANAGEMENT  
Washington, D.C. January 7, 1963

This plat, showing amended lottings, is based upon the official records, and having been correctly prepared in accordance with the regulations, is hereby accepted.

For the Director

*E. L. Livingston*

Chief, Division of Engineering

T. 4 N., R. 13 E. M.D.M.

BLM 190