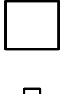
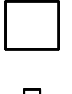
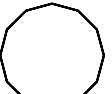
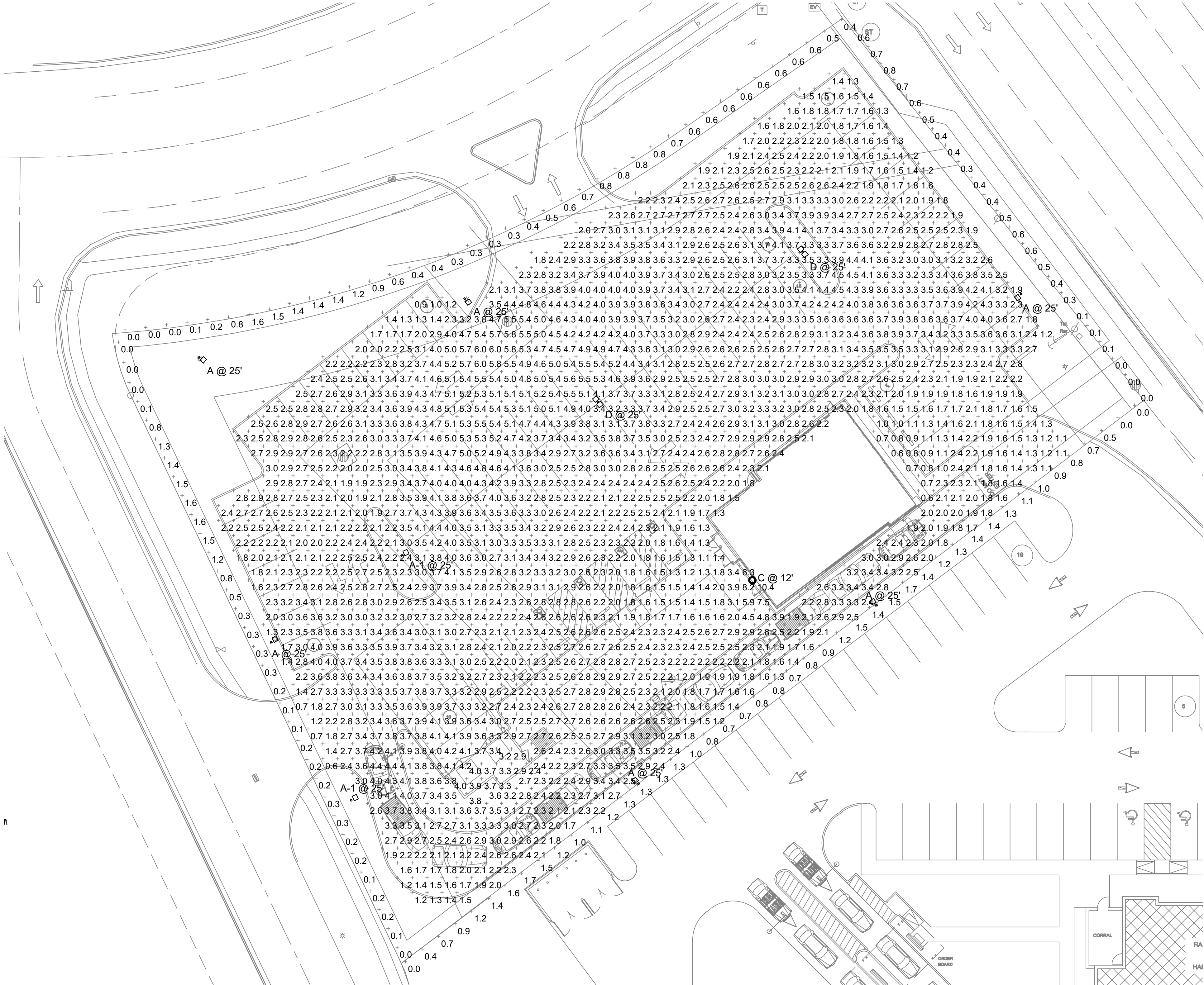


Symbol	Label	QTY	Catalog Number	Description	Number Lamps	Filename	Lumens per Lamp	LLF	Wattage
	A	6	SLM-LED-18L-SIL-FT-40-70CRI-IL- REUSE EXISTING POLES	CONTACT RYAN ZINSELMEIER-314-531-2600	1	SLM-LED-18L-SIL-FT-40-70CRI-IL.ies	12046	1	148.5
	A-1	2	SLM-LED-18L-SIL-FT-40-70CRI-IL	CONTACT RYAN ZINSELMEIER-314-531-2600	1	SLM-LED-18L-SIL-FT-40-70CRI-IL.ies	12046	1	148.5
	C	1		VL305	1	IES_VL305.ies	3290	1	27.9

Statistics						
Description	Symbol	Avg	Max	Min	Max/Min	Avg/Min
CALC SUMMARY- PAVED SURFACE	+	2.9 fc	10.4 fc	0.6 fc	17.3:1	4.8:1
Calc Zone #3	+	0.7 fc	1.7 fc	0.0 fc	N/A	N/A
TRASH ENCLOSURE	+	3.4 fc	4.0 fc	2.4 fc	1.7:1	1.4:1

Note						
1. MOUNTING HEIGHT OF 25'						
2. CALCULATIONS TAKEN AT GROUND LEVEL						
3. CONTACT VILLA LIGHTING- RYAN ZINSELMEIER- RYAN.ZINSELMEIER@VILLALIGHTING.COM- 314-531-2600						

SITE LIGHTING FIXTURE SCHEDULE				3	PANDA SITE LIGHTING DESIGN CRITERIA				2
				E-106	NO SCALE				E-106



PANDA EXPRESS, INC.
1683 Walnut Grove Ave.
Rosemead, California
91770
Telephone: 626.799.9898
Facsimile: 626.372.8288

All ideas, designs, arrangement and plans indicated or represented by this drawing are the property of Panda Express Inc. and were created for use on this specific project. None of these ideas, designs, arrangements or plans may be used by or disclosed to any person, firm, or corporation without the written permission of Panda Express Inc.

REVISIONS:

ISSUE DATE:

1st	BUILDING PERMIT SET	04-02-21

DRAWN BY: KB

PANDA PROJECT #: S8-22-D8193
PANDA STORE #: -
ARCH PROJECT #: 20044.021



hckloverarchitect
8813 PENROSE LANE, SUITE 400
LENEXA, KS 66219
ph: 913.649.8161 • fx: 913.649.1275

PANDA EXPRESS
TRUE WARM & WELCOME
1485 MAIN ST.
HAMILTON, OH 45013

E-106
HOT - MEDIUM
SITE PHOTOMETRIC PLAN