

CORNER RECORD

Agency Index

133 49

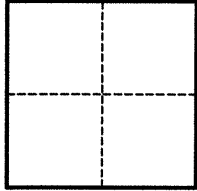
Document Number CR 14075

City of OAKLAND County of ALAMEDA, California

Brief Legal Description IRON PIN MONUMENT LOCATED WITHIN THE INTERSECTION OF ADELINE STREET AND 24TH STREET.

CORNER TYPE

COORDINATES (OPTIONAL)



- ☐ Government Corner ☒ Control
☐ Meander ☐ Property
☐ Rancho ☐ Other

Date of Survey 01/10/2020

N. _____ E. _____

Elevation _____

Units ☐ Metric ☐ U.S. Survey Foot

Horizontal Datum _____

Zone _____ Epoch Date _____

Vertical Datum _____

☐ Complies with Public Resources Code §§8801-8819☐ Complies with Public Resources Code §§8890-8902PLS Act Ref.: ☐ 8765(d) ☒ 8771 ☐ 8773 ☐ Other:Corner/Monument: ☒ Left as found ☐ Established ☐ Rebuilt ☒ Pre-Construction☐ Found and tagged ☐ Reestablished ☒ Referenced ☐ Post-Construction

Narrative of corner identified and monument as found, set, reset, replaced, or removed:

☒ See sheet #2 for description(s):

SEE REFERENCE POINTS ON PAGE 2, USED FOR PERPETUATION THROUGH CONSTRUCTION.

NOTE: NO WARRANTY EXPRESSED OR IMPLIED AS TO THE MONUMENTS SHOWN HEREON HAVING BEEN SET IN THE CORRECT LOCATION BY THE ORIGINAL SURVEYOR OR ENGINEER.

SURVEYOR'S STATEMENT

This Corner Record was prepared by me or under my direction in conformance with

the Professional Land Surveyors' Act on 01/23/2020

Signed John H. Ross Jr. P.L.S. or R.C.E. No. 9317

COUNTY SURVEYOR'S STATEMENT

This Corner Record was received

APR 09 2020

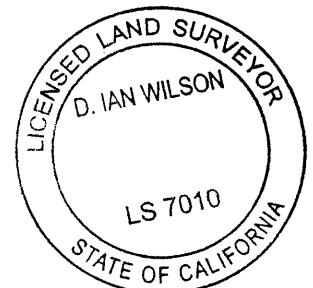
and examined and filed

APR 13 2020

Signed D. Ian Wilson P.L.S. or R.C.E. No. 7010

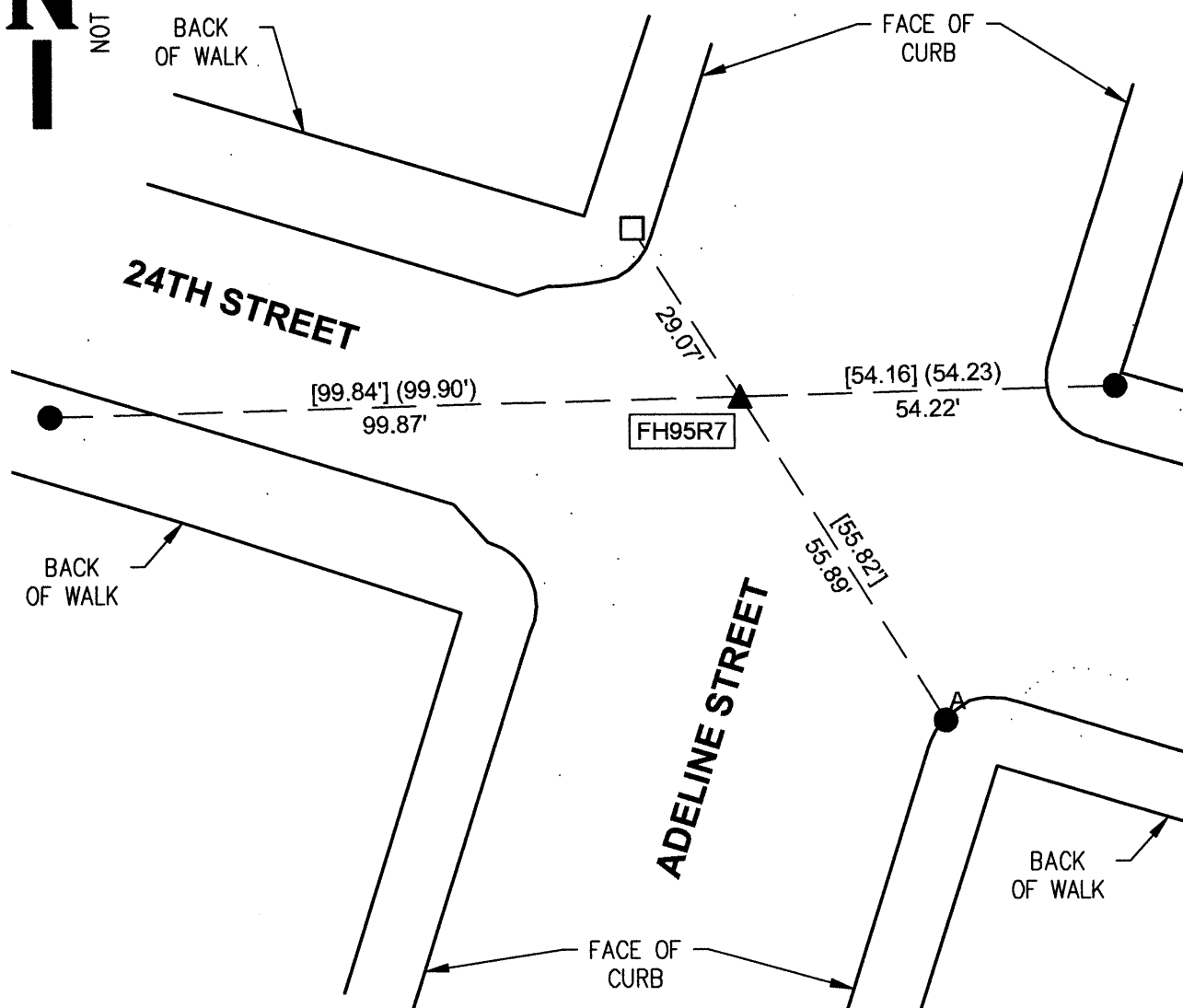
Title ALAMEDA COUNTY SURVEYOR

County Surveyor's Comment



N

NOT TO SCALE



LEGEND

- ▲ INDICATES FOUND MONUMENT WELL WITH IRON PIN.
- INDICATES FOUND NAIL & TAG LS 4520.
- ^A INDICATES FOUND EAST BAY MUNICIPAL DISTRICT NAIL AND WASHER.
- INDICATES FOUND NAIL AND TAG LS 8494.
- () INDICATES RECORD DATA PER CR 4338.
- [] INDICATES RECORD DATA PER CR 12286.

XX##X#

INDICATES ALAMEDA COUNTY MONUMENT IDENTIFICATION.