

RECORD OF SURVEY

PORTION OF LOT 24 OF THE RANCHO
SOQUEL AUGMENTATION

SANTA CRUZ COUNTY, CALIFORNIA

SCALE: 1"=300'-DATE: MARCH, 1963

hastin & kingston
CIVIL ENGINEERING-LAND SURVEYING
40 WOODHAMS RD. SANTA CLARA, CALIFORNIA

SURVEYOR'S CERTIFICATE

This map, consisting of one (1) sheet, correctly represents a survey made under my direction in conformance with the requirements of Chapter 15 of Division 3 of the Business and Professions Code, at the request of Von Eberly in March, 1963.

Howard G. Kingston, Jr.
Howard G. Kingston, Jr., S. 2714

COUNTY SURVEYOR'S CERTIFICATE

This map has been examined for conformance with the requirements of Chapter 15 of Division 3 of the Business and Professions Code this 19th day of June, 1963.

Frank B. Lewis, County Surveyor

Frank B. Lewis

COUNTY RECORDER'S CERTIFICATE

File 17116 Fee \$5.00 (Five) paid.
Filed for record this 20th day of June, 1963, at 8:53 AM, in Book 40 of Maps at Page 21 at the request of Howard G. Kingston.

Tom Kelley, County Recorder

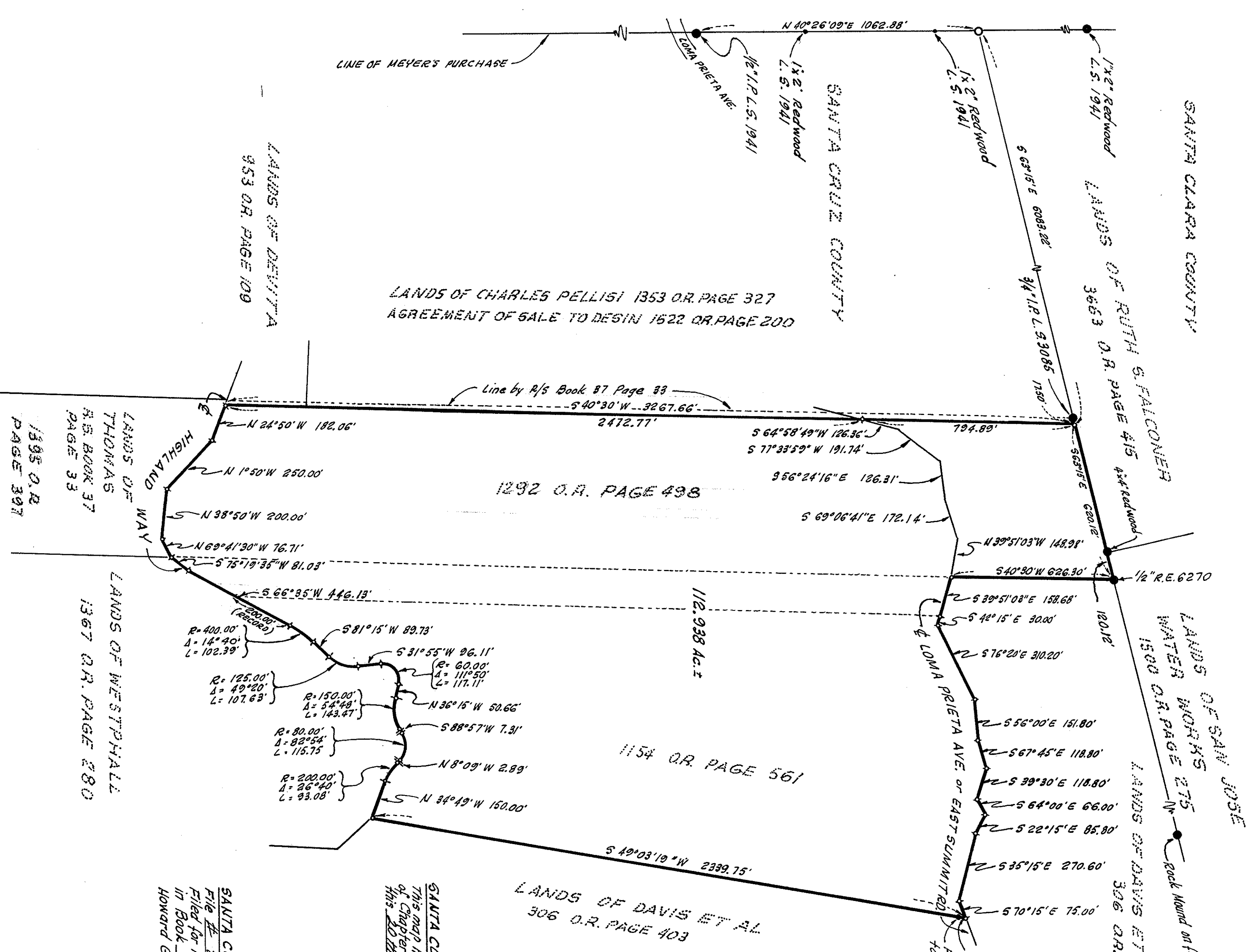
Tom Kelley

SANTA CLARA COUNTY RECORDER'S CERTIFICATE

File # 242-5531 Fee \$5.00 (Five) paid.
Filed for record this 20th day of June, 1963, at 10:57 AM, in Book 162 of Maps at Page 52 at the request of Howard G. Kingston.

PAUL R. TELLY
Paul R. Telly, County Recorder
By Deputy *Paul R. Telly*

By Deputy *Paul R. Telly*



LEGEND AND NOTE
• Indicates monument or marker found.
• Indicates 3/4" iron pipe set as of this date.
All distances and dimensions are shown in feet and decimals thereof.

