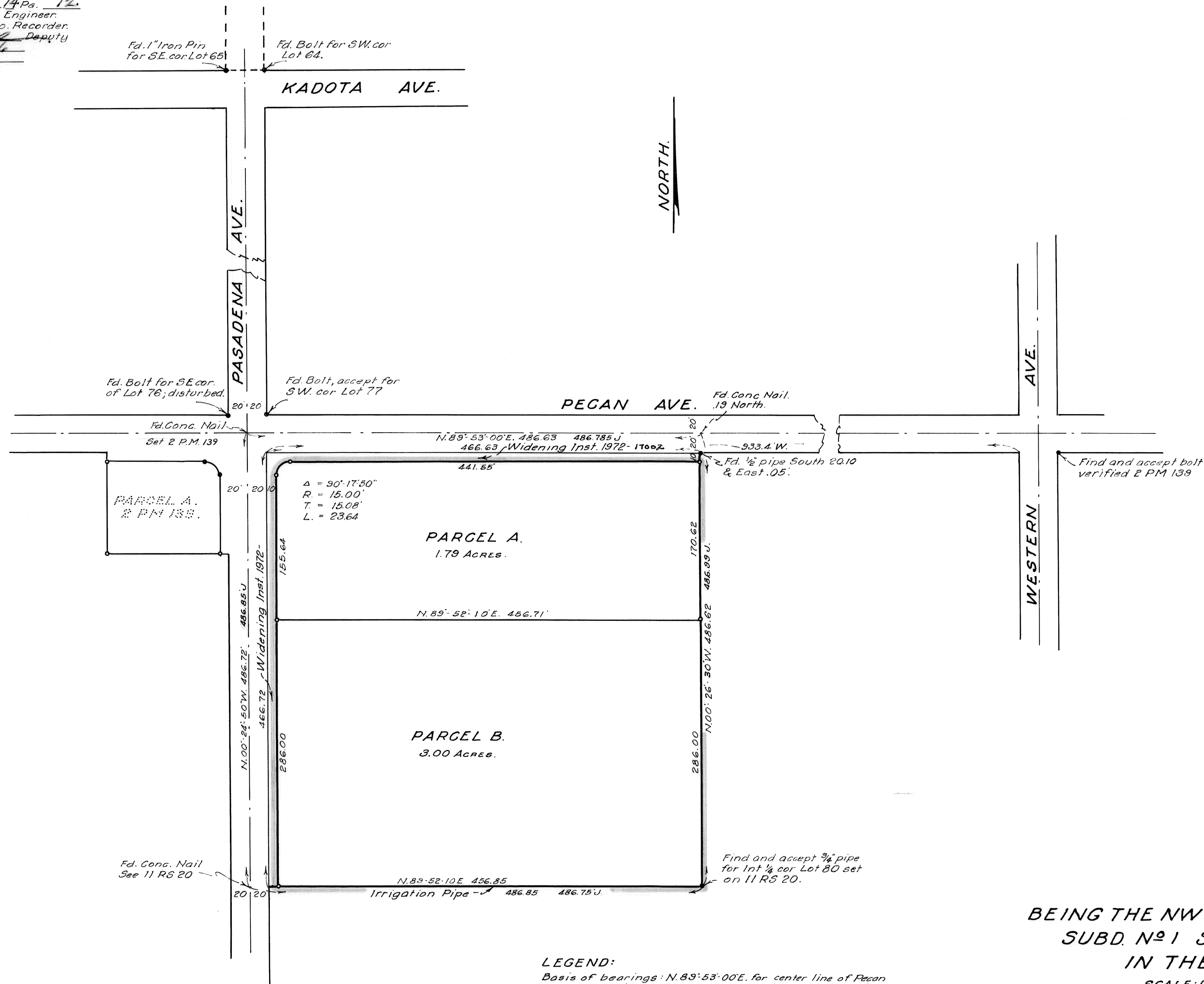


Filed this 1 day of May 1972
At 2:00 PM
Parcel Maps Vol. 14 Pg. 12
At request of City Engineer
Steve Nelson Co. Recorder
By Oliver E. Deatsch Deputy
Inst. No. 1753
Fee. \$5.00

14 P.M. 12



This map has been examined this 21 day of APRIL, 1972
for conformance with the requirements of Section 11575
of the Subdivision Map Act.

Roger L. Gregg
City Engineer.

This map was prepared by me and is based on a field survey in conformance with the requirements of the Subdivision Map of the request of THE CHURCH OF THE NAZARENE April 1971. I hereby certify that it conforms to the approved tentative map and the conditions of approval thereto; that all provisions of applicable state law have been complied with.

Oliver E. Deatsch
Oliver E. Deatsch, Reg. Civil Engr. N° 6693.

14 P.M. 12