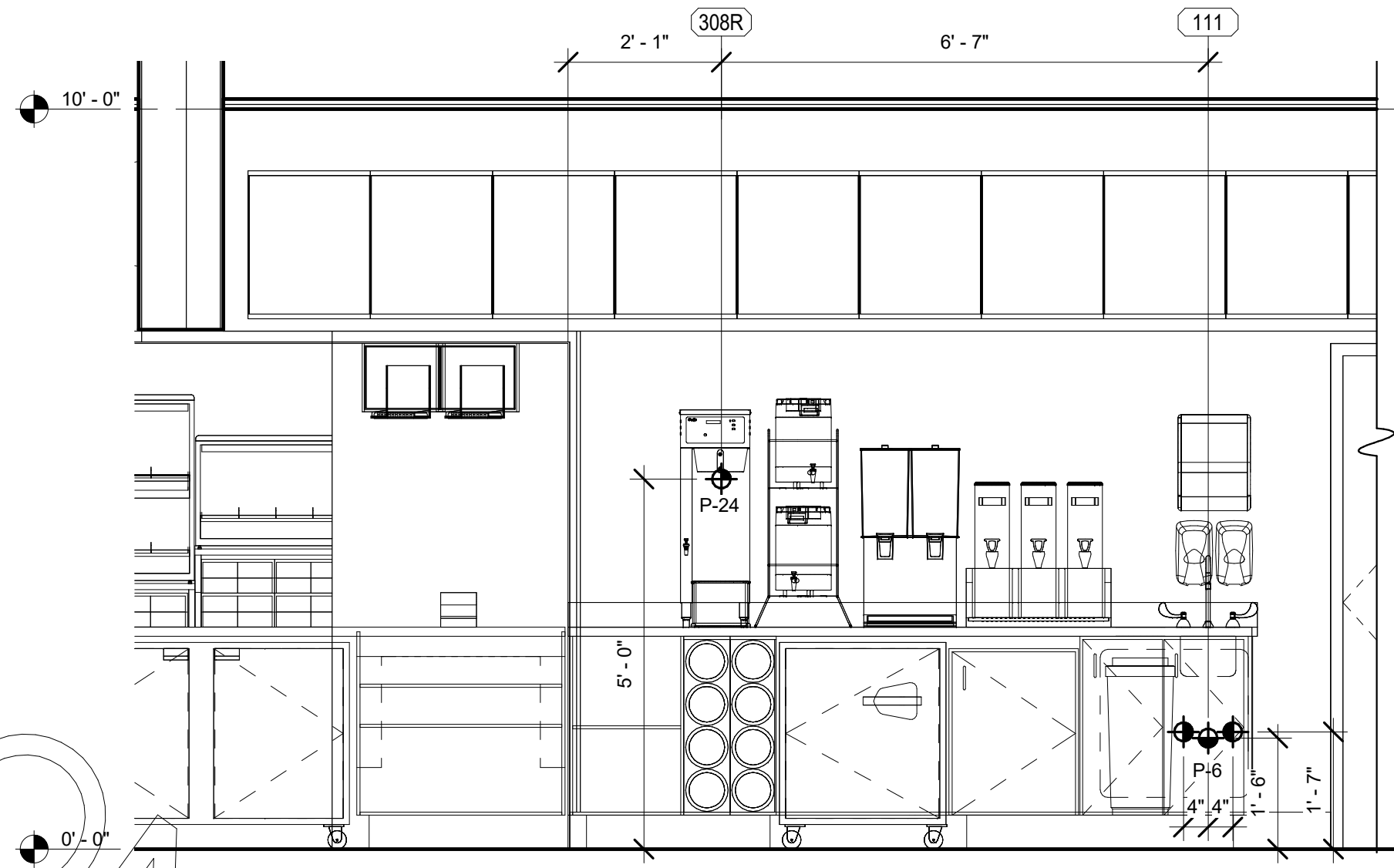
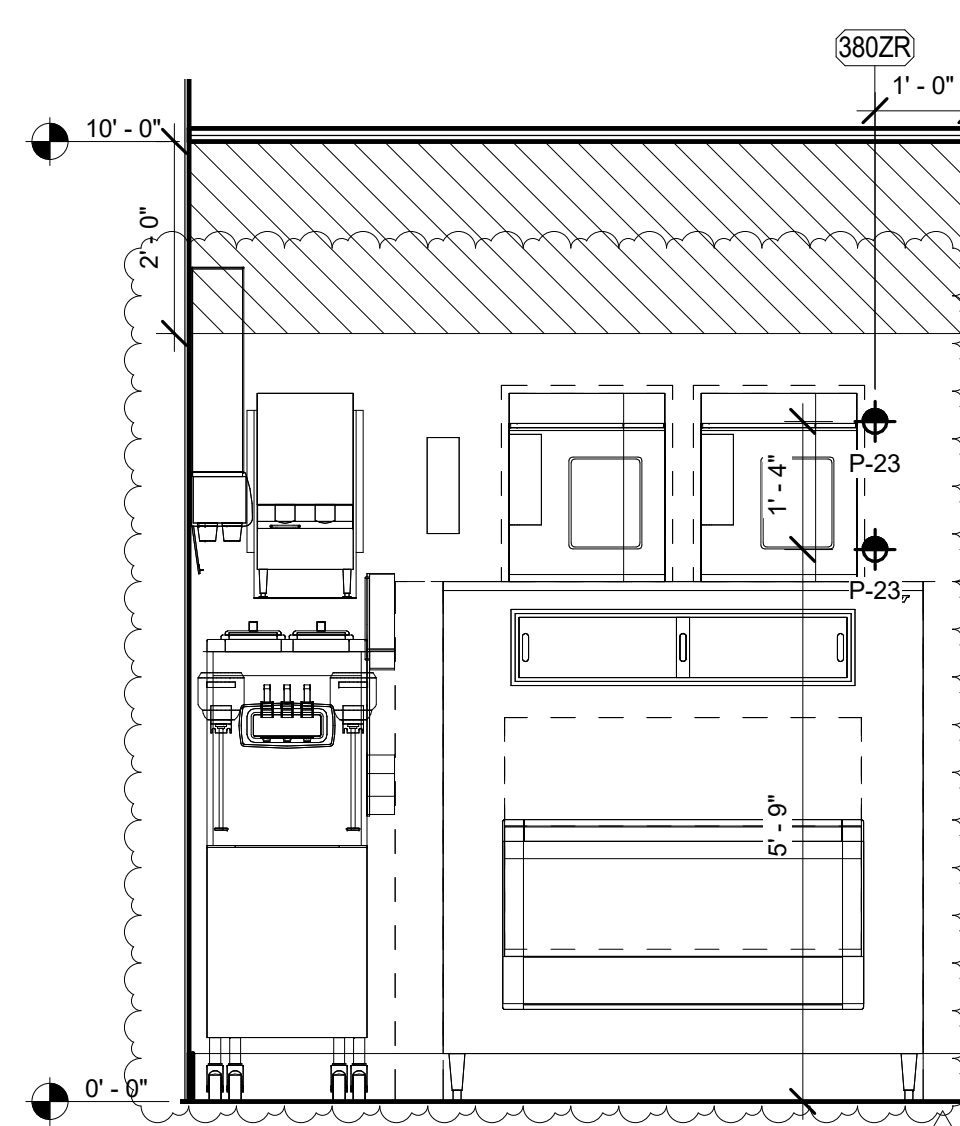


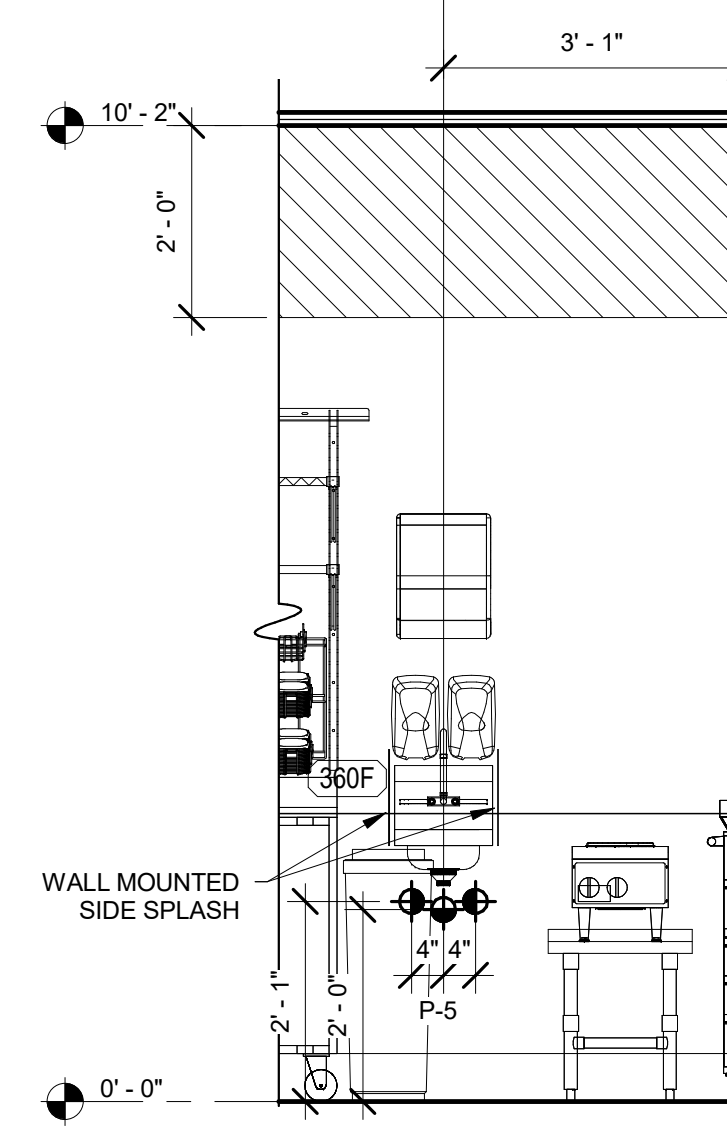
1 DRIVE - THRU - PLUMBING
1/2" = 1'-0"



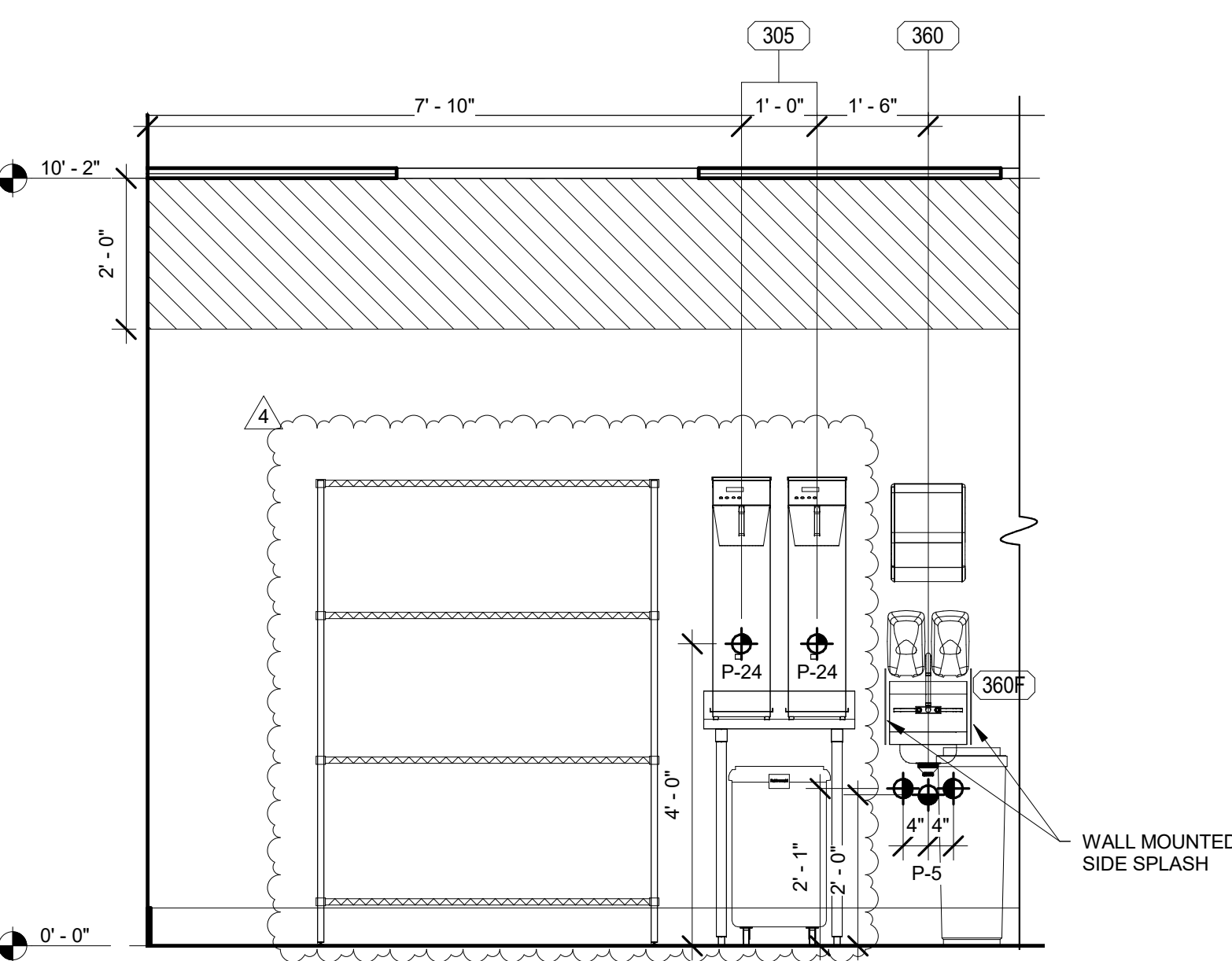
2 DRIVE - THRU - PLUMBING
1/2" = 1'-0"



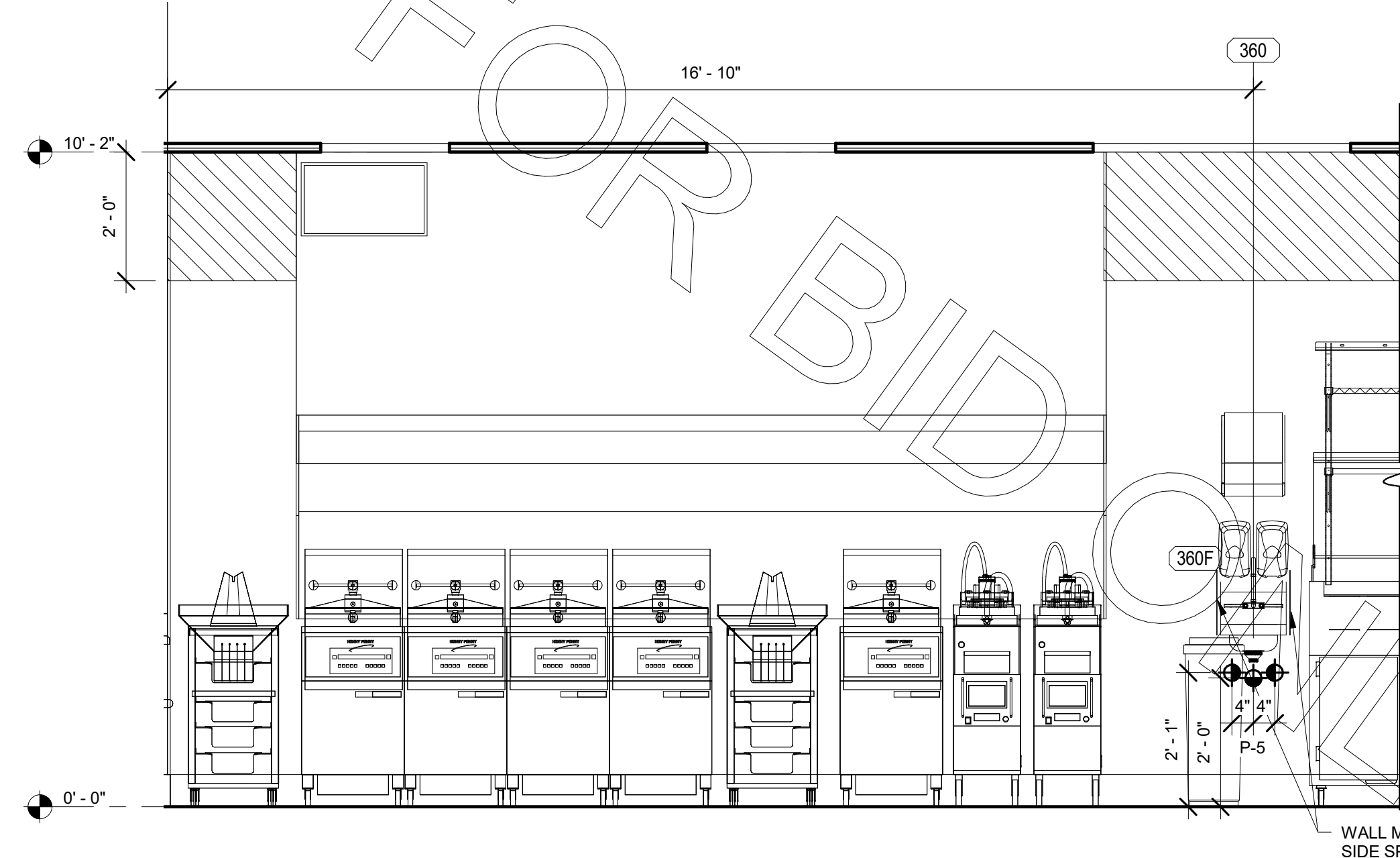
3 DRIVE - THRU - PLUMBING
1/2" = 1'-0"



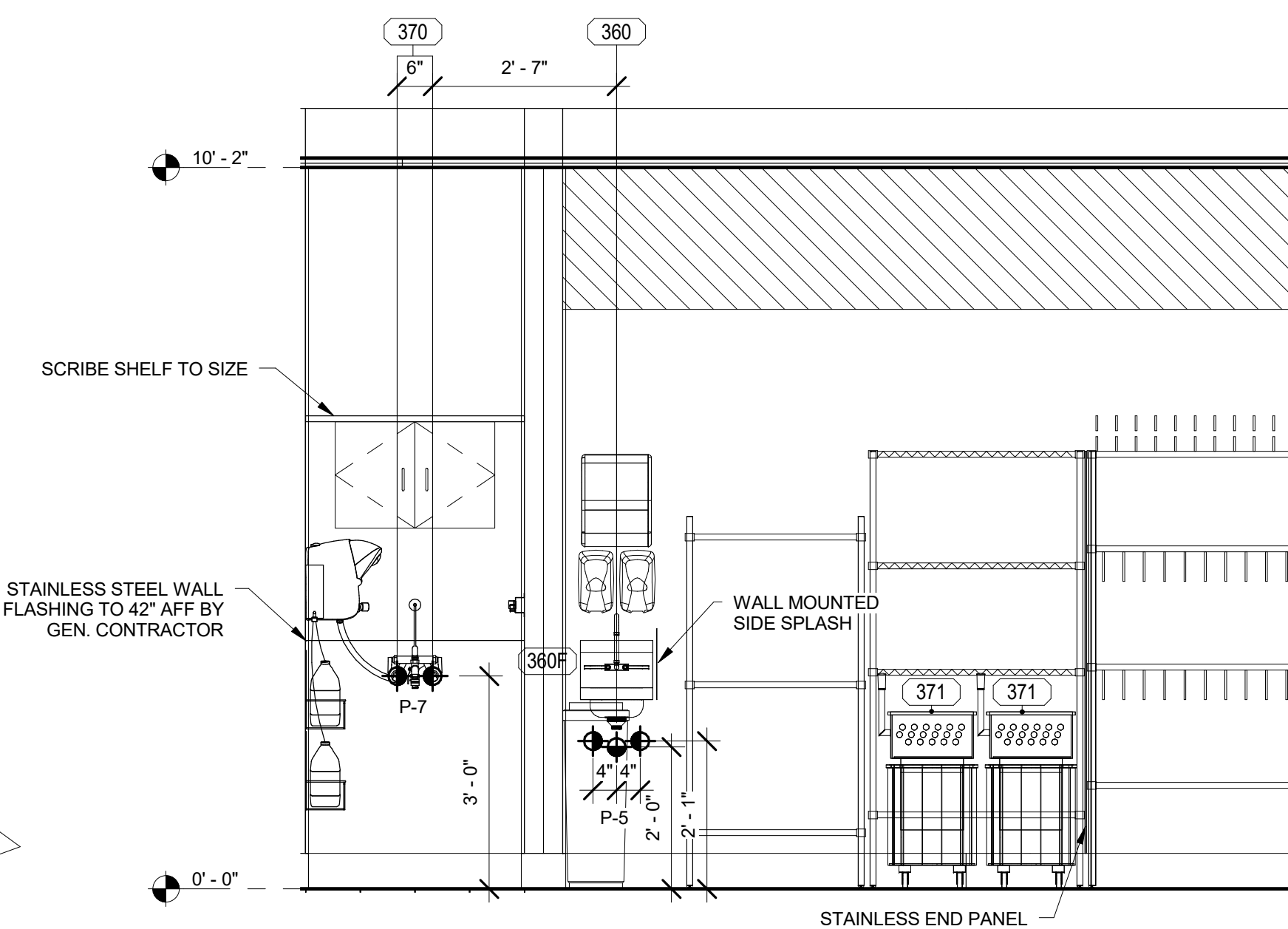
4 KITCHEN - PLUMBING
1/2" = 1'-0"



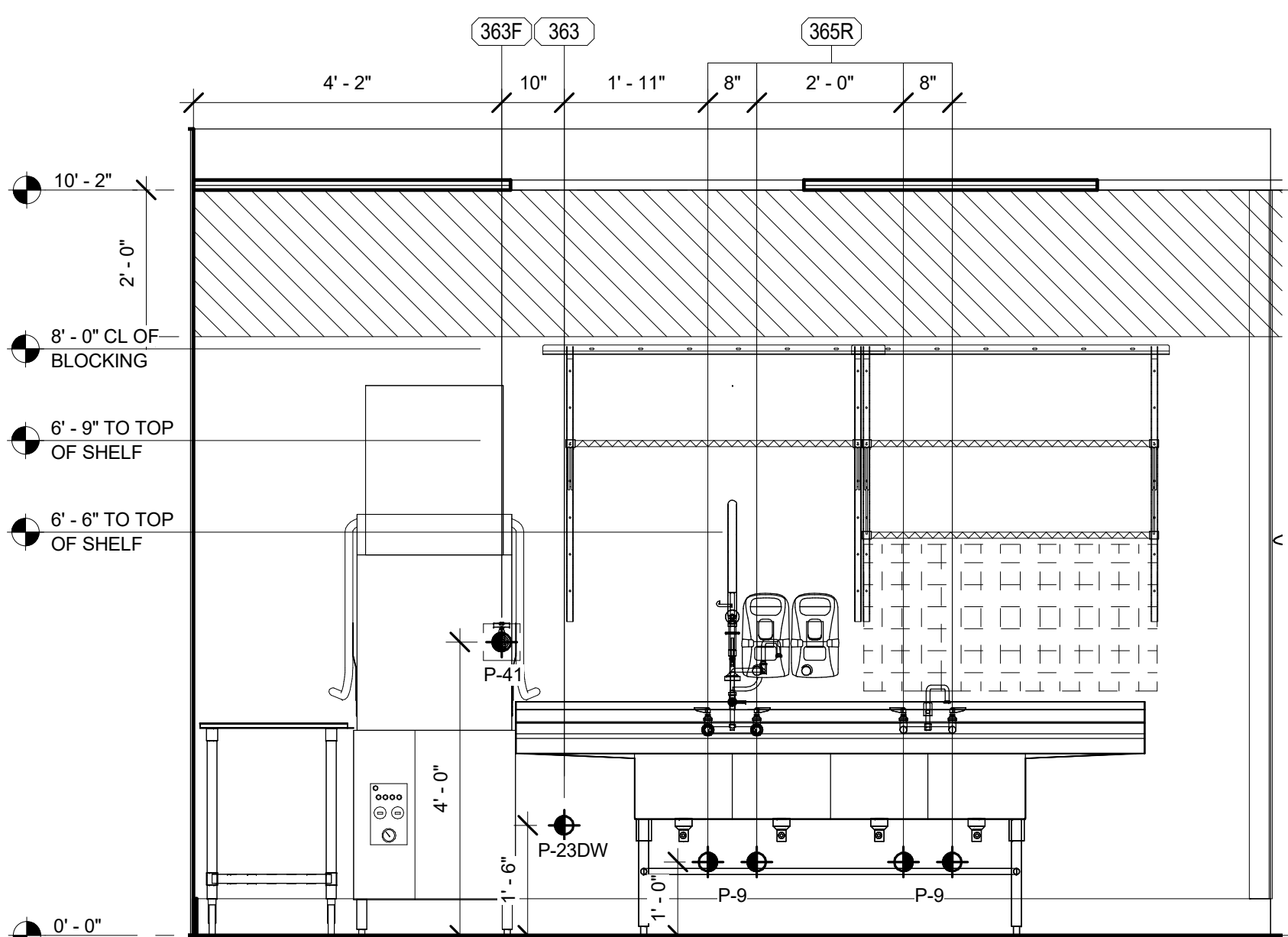
5 KITCHEN - PLUMBING
1/2" = 1'-0"



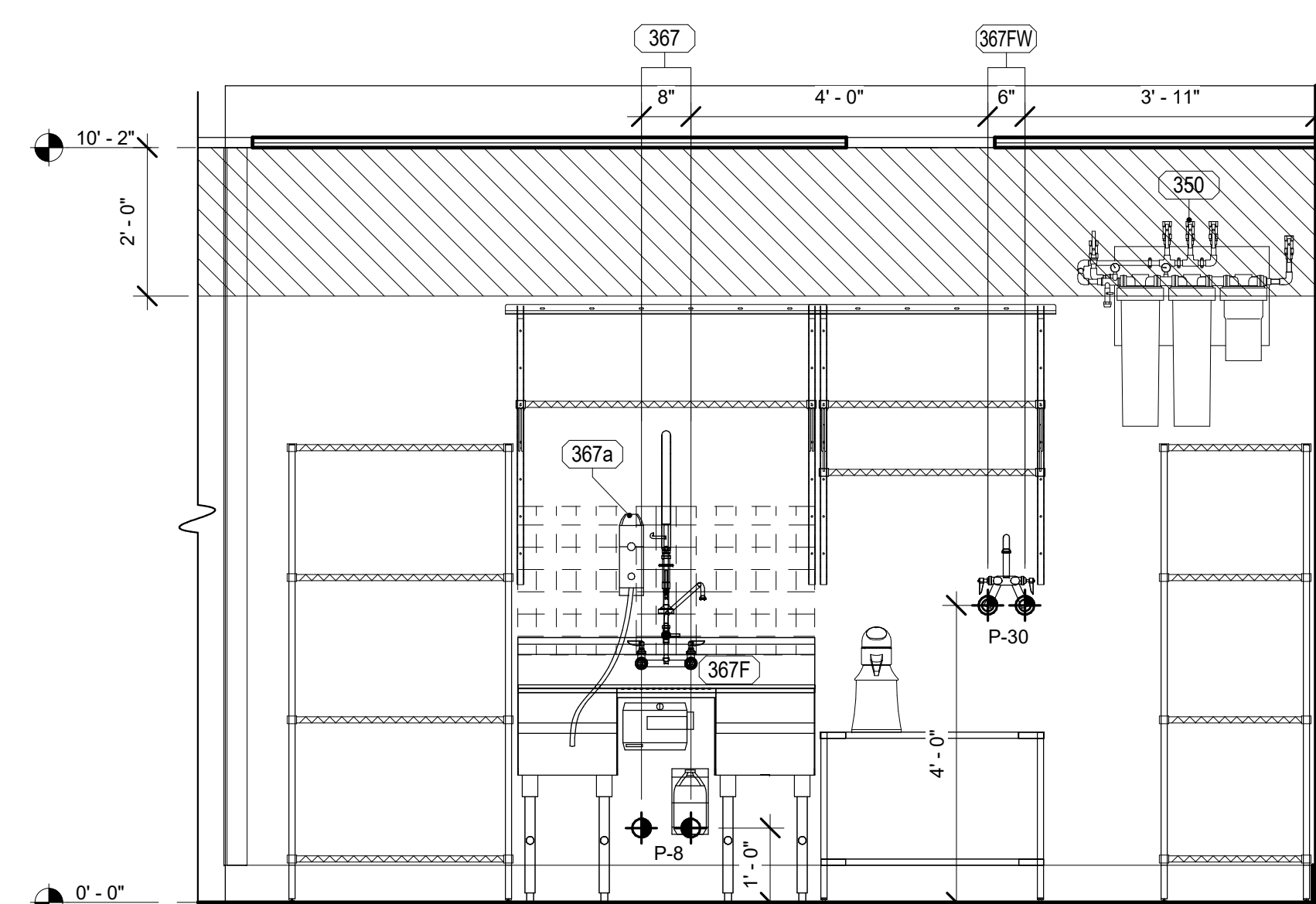
6 KITCHEN - PLUMBING
1/2" = 1'-0"



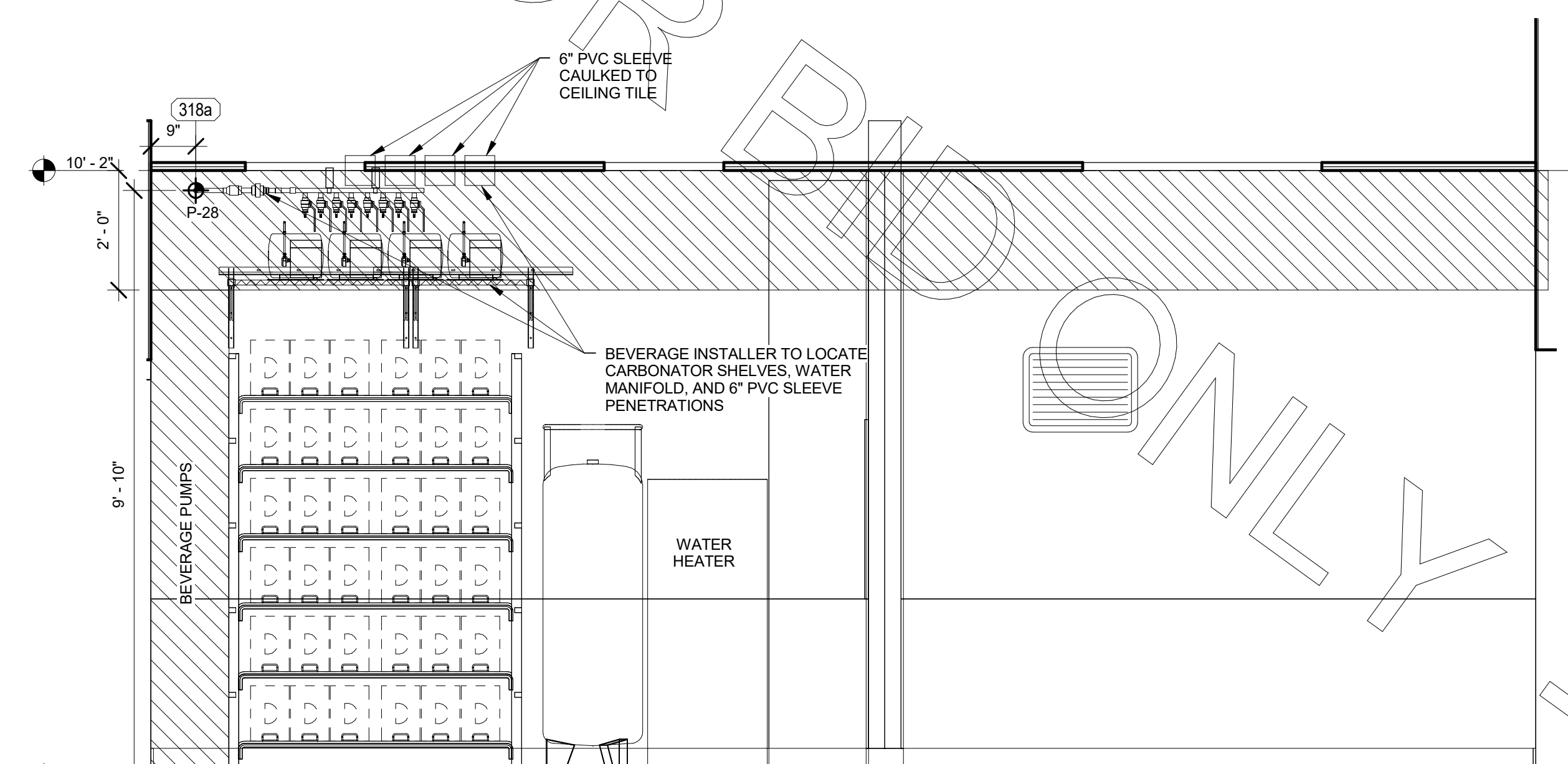
7 KITCHEN - PLUMBING
1/2" = 1'-0"



8 KITCHEN - PLUMBING
1/2" = 1'-0"



9 KITCHEN - PLUMBING
1/2" = 1'-0"



10 UTILITY - PLUMBING
1/2" = 1'-0"

ELEVATION LEGEND	
888Aa	EQUIPMENT NUMBER
●	HOT WATER
○	COLD WATER
●	FILTERED WATER (FW)
○	FILTERED WATER (FW)
●	SAN.



Chick-fil-A

Chick-fil-A
5200 Buffington Road
Atlanta, Georgia
30349-2998

TriMark
Foodservice Equipment, Supplies and Design

STRATEGIC

CHICK-FIL-A
Cherokee Place
Cartersville, GA

FSR# 00534

REVISION SCHEDULE		
NO.	DATE	DESCRIPTION
4	01/31/18	Coordination Revisions

CURRENT TEMPLATE	NOVEMBER 2017
UPDATE APPLIED	00000
ARCHITECT'S PROJECT #	
PRINTED FOR	PERMIT
DATE	
DRAWN BY	AMS

Information contained on this drawing and in all digital files produced for above named project may not be reproduced in any manner without express written or verbal consent from TriMark Foodservice Equipment, Supplies and Design.

SHEET
PLUMBING ROUGH-IN
ELEVATIONS

SHEET NUMBER

K-401

PERMIT