

SCALE: 1"=20'
ACREAGE: 0.800 ACRES
NO. LOTS: 29

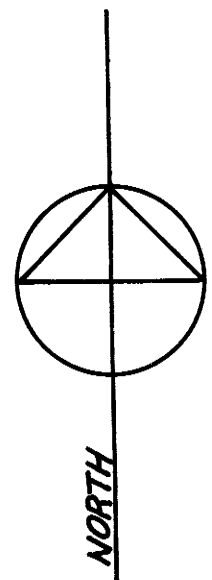
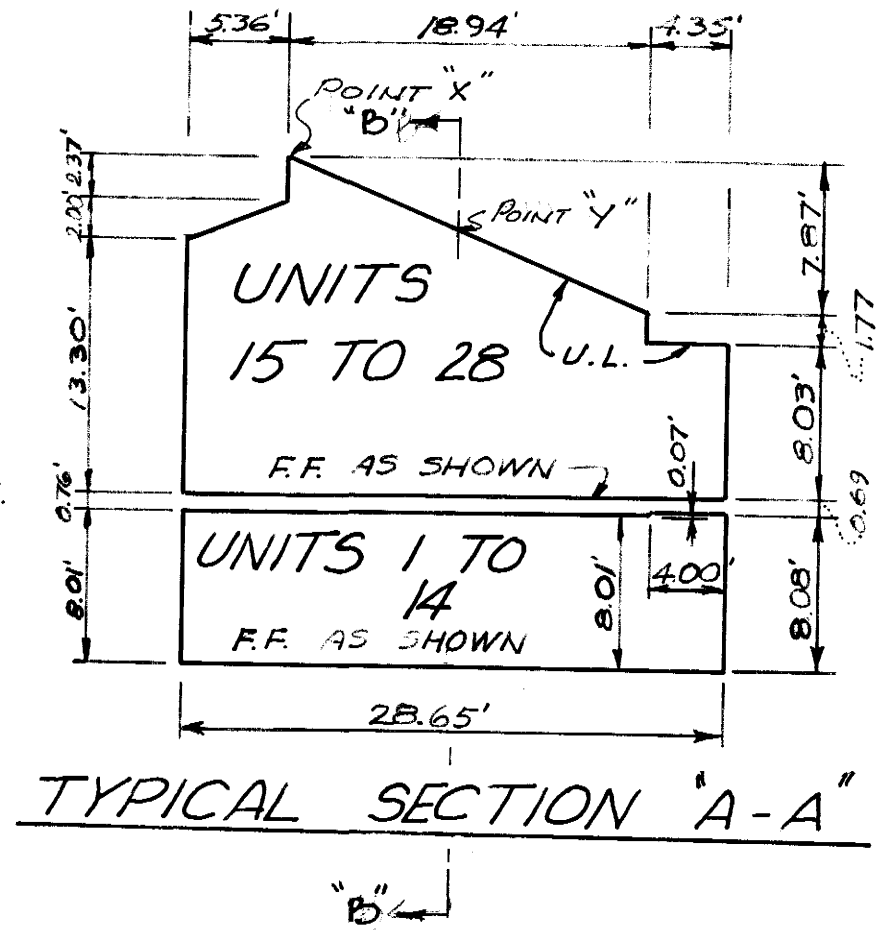
KRYSTAL VILLA UNIT NO. 3

SHEET 4 OF 4 SHEETS

IN THE UNINCORPORATED TERRITORY OF MONO COUNTY, CALIFORNIA
E.T. CONRAD, RCE 14794
JULY, 1969
FOR CONDOMINIUM PURPOSES

NOTE: REFER TO SHEETS
1 & 2 NOTES

LOWER PORTION IS A
TYPICAL SECTION OF
EACH OF UNITS 1
THROUGH 14 INCLUSIVE.
UPPER PORTION IS A
TYPICAL SECTION OF
EACH OF UNITS 15
THROUGH 28 INCLUSIVE.



LAUREL MOUNTAIN ROAD

MAMMOTH TAVERN ROAD

LOT 29
COMMON
AREAS

EXISTING 10' SANITARY SEWER EASEMENT
MAMMOTH COUNTY WATER DISTRICT

TYPICAL SECTION "B-B"

Jul 6 9 22/2
pg 68-2