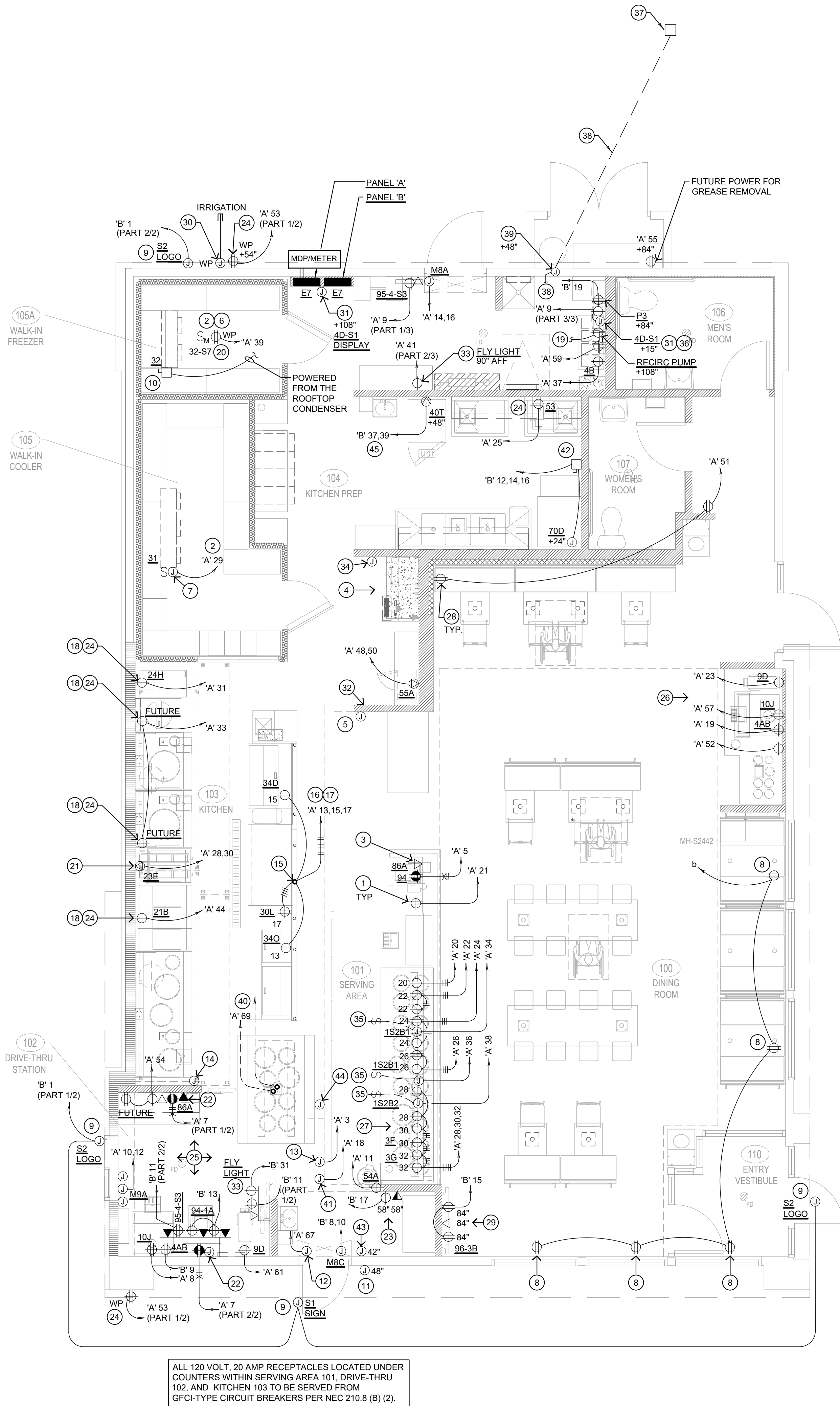


- ALL CIRCUITRY/CONDUIT FOR FRONT LINE EQUIPMENT TO BE ROUTED IN CASEWORK TO J-BOX IN WALL AND CONCEALED IN THE WALL.
- PROVIDE SEALS AND EXPANSION COUPLINGS ON ALL CONDUITS ENTERING OR LEAVING AREAS OF TEMPERATURE DIFFERENCE. REFER TO WIRING NOTES,DETAIL 8/E-400 FOR ADDITIONAL INFORMATION.
- PROVIDE (2) 1 1/2" CONDUITS WITH PULL STRINGS FROM CASH REGISTER TO MANAGER'S STATION. SEE P.O.S. AND SERVICE LINE ELEVATIONS, DETAIL 3/E-200.
- SEE 'MANAGER'S STATION ELEVATION', DETAIL 1/E-200 FOR ADDITIONAL OUTLETS AND J-BOXES.
- ANSUL PULL STATION. REFER TO DETAIL 2/E-400.
- REFER TO 'LTG AND DOOR HEATER WIRING DIAGRAM', DETAIL 10/E-400.
- REFER TO 'COOLER EVAPORATOR COIL' WIRING DIAGRAM, DETAIL 8/E-400.
- SHOW WINDOW RECEPTACLE SHALL BE CONTROLLED VIA SWITCH 'b'. REFER TO LIGHTING SWITCHBANK SCHEDULE, DETAIL 4/E-101. RECEPTACLE SHALL BE MOUNTED IN WALL AS CLOSE TO TOP OF STRUCTURAL HEADER AS POSSIBLE.
- BUILDING SIGNAGE/LOGO DEDICATED W.P. J-BOX. FOR SIGNAGE. COORDINATE LOCATION WITH ARCHITECT / OWNER / SIGN PACKAGE.PRIOR TO ROUGH-IN. SIGN DISCONNECT PROVIDED BY SIGN CONTRACTOR.
- REFER TO 'FREEZER EVAPORATOR COIL' WIRING DIAGRAM, DETAIL 9/E-400. THE FAN COIL UNIT IS POWERED FROM THE CONDENSER UNIT ON THE ROOF VIA A DISCONNECT CONNECTION. HEAT TAPE IS PROVIDED AND INSTALLED BY THE ELECTRICIAN.
- PROVIDE J-BOX WITH PULL STRING TO ABOVE CEILING FOR DOOR KEYPAD CONTROL WIRING.
- J-BOX CIRCUIT ABOVE CEILING TO POWER ELECTRIC DOOR HARDWARE.
- HOOD CONTROL PANEL/ANSUL SYSTEM CABINET. MOUNT CABINET DIRECTLY BELOW T-BAR CEILING.
- PROVIDE 2-GANG J-BOX @ 48" AFF FOR HOOD CONTROL SWITCHES. REFER TO SHEETS M-400 AND M-401.
- 1" CONDUIT STUB UP LOCATION IN STAINLESS STEEL POWER PANEL FOR ISLAND KITCHEN EQUIPMENT CONNECTION. REFER TO DETAIL 2/A-109. COORDINATE LOCATION WITH ARCHITECT / OWNER.
- ROUTE CABLING / CIRCUITRY THROUGH 1" CONDUIT IN SLAB.
- UTILIZE SEAL TIGHT CONDUIT FOR ALL WIRING INCLUDED ALONG LOW WALL PANEL.
- ALL DEVICES UNDER HOOD TO BE PROVIDED AND INSTALLED WITH GROUND FAULT CIRCUIT BREAKERS AND WATER- PROOFING BOX (RED DOT#CKSU) REFER TO COOKLINE ELECTRICAL ELEVATIONS 6/E-200. ROUTE HOMERUN THROUGH CONTACTOR INTERFACED WITH THE HOOD FIRE SUPPRESSION SYSTEM. REFERENCE DETAIL 13/E-400 FOR ADDITIONAL INFORMATION.
- SIMPLEX RECEPTACLE TO BE CONNECTED TO BACK-OF-HOUSE LIGHTING CIRCUITRY/CONTROL. CONTRACTOR TO PROVIDE PIGTAIL FROM CIRCULATION PUMP.
- PROVIDE WEATHERPROOF RECEPTACLE FOR HEAT TAPE. COORDINATE FINAL LOCATION WITH REFRIGERATION INSTALLER.
- ELECTRIC GRIDDLE '23E'. FEED WITH 2#6, #10 GROUND, 3/4" CONDUIT. REFER TO DETAIL 4/E-200.
- SEE DRIVE-THRU ELEVATION 2/E-200 FOR CONDUIT SIZES AND CONFIGURATIONS.
- SEE TICKET PRINTER ELEVATIONS, DETAIL 7/E-200.
- PROVIDE WATERPROOFING COVER, IN-USE, RED DOT (#CKSU).
- SEE DRIVE-THRU ELEVATIONS, DETAIL 2/E-200.
- SEE DRINK STATION ELEVATION, DETAIL 5/E-200.
- SEE DETAIL 3/E-200 FOR SERVICE LINE ELEVATIONS.
- SEE DEVICE/RECEPTACLE SCHEDULE DETAIL 3/E-400.
- SEE DINING ROOM MONITOR ELEVATION, DETAIL 8/E-200.
- PROVIDE AND INSTALL 3/4" CONDUIT AND PULL STRING FROM CLOSEST LANDSCAPE AREA, THROUGH WALL AND UP TO EMPTY FLUSH MOUNTED JUNCTION BOX @ 54" A.F.F. (FOR IRRIGATION CONTROLS). CLOSE OFF CONDUIT IN LANDSCAPE AREA WITH REMOVABLE CAP. UTILIZE CIRCUIT 'A'-53 NEAR ENTRY POINT.
- REFER TO DETAIL 9/E-200 FOR LOCATION/INSTALLATION OF CO2 DEVICE.
- SEE SWITCH BANK ELEVATION, DETAIL 7/E-200.
- FLY LIGHT RECEPTACLE SHALL BE INSTALLED WITH A RECESSED SIMPLEX CLOCK OUTLET. TYPICAL FOR ALL LOCATIONS.
- SEE SECURITY KEY PAD ELEVATION, DETAIL 1/E-200.
- CONNECT HEAT LAMPS TO COUNTER-MOUNTED SWITCH PROVIDED AND INSTALLED BY THE CONTRACTOR. COORDINATE EXACT LOCATION WITH KITCHEN EQUIPMENT PROVIDER.
- PANDA EXPRESS TO PROVIDE CO2 MONITOR. E.C TO MOUNT OVER J-BOX WITH WIRING THROUGH WALL CONDUIT FOR CLEAN INSTALLATION. PROVIDE ALL OTHER REQUIRED CONNECTIONS AND COMPONENTS FOR A FULLY WORKING SYSTEM.
- PROVIDE IN-GRADE QUAZITE 8" X8" PC STYLE POLYMER CONCRETE BOX OR EQUAL FOR UNDERGROUND CABLE REQUIRED FOR THE STORE. PART # PC081XXXXX OR SIMILAR. REFER TO ELECTRICAL SITE PLAN 1/E-105.
- PROVIDE 1" CONDUIT FOR CABLE DEDICATED FOR ENTIRE STORE FROM IN-GRADE 8" X 8" QUAZITE BOX TO EXTERIOR CLOSET 6" X 6" FLUSH MOUNTED JUNCTION BOX. TERMINATE INTERIOR CONDUIT ABOVE CEILING.
- PROVIDE FLUSH MOUNTED NEMA 1, 6" X 6" JUNCTION BOX AT +48" AFF. HUBBELL OR EQUAL. ROUTE CABLE FROM EXTERIOR CLOSET 6" X 6" J-BOX IN 1" CONDUIT THROUGH BUILDING. TERMINATE INTERIOR CONDUIT ABOVE CEILING.
- PROVIDE A 1" CONDUIT FOR POWER SUPPLY CIRCUIT TO THE DRIVE-THRU HOT WELL CABINET. TERMINATE IN A J-BOX OR PROVIDE A MATCHING RECEPTACLE IF THE CABINET IS SUPPLIED WITH A CORD AND PLUG. VERIFY IN FIELD. PROVIDE A 3/4" CONDUIT FROM THIS LOCATION TO ABOVE THE CEILING NEAR THE MANAGER'S STATION FOR LOW VOLTAGE WIRING.
- FIRE SUPPRESSION SHUT-DOWN CONTACTOR LOCATED ABOVE THE CEILING. REFER TO DETAIL 12/E-400.
- PROVIDE A WALL MOUNTED 60A, 3P., NEMA 3R, NON-FUSED DISCONNECT SWITCH FOR THE DISHWASHER. PROVIDE A 1" WATER TIGHT WHIP WITH 3#8, 1#10G. FROM THE DISCONNECT TO THE DISHWASHER CONNECTION POINT AT THE BACK OF THE UNIT. FINAL CONNECTION SHALL BE BY HOBART SERVICES.
- PROVIDE A JUNCTION BOX FOR THE DOOR RELEASE BUTTON.
- MOUNT THE CAPTIVEAIRE SENSOR ON SOFFIT NEAR THE DRIVE-THRU STATION. COORDINATE THE LOCATION WITH THE MECHANICAL CONTRACTOR. REFER TO SHEET M-401 FOR ADDITIONAL INFORMATION.
- THAWING CABINET. PROVIDE A 20A, 125/250V RECEPTACLE WITH 3#12, 1#12G, 3/4"C.

- VERIFY QUANTITIES AND REQUIREMENTS OF ALL HVAC & KITCHEN EQUIPMENT PRIOR TO ROUGH IN.
- ALL TELEPHONE/DATA/TV CABLES AND WIRES AND TERMINATIONS OF ALL REQUIRED CABLE AND JACKS WILL BE INSTALLED BY A THIRD PARTY.
- POWER SUPPLY FOR COMPUTER AND CASH REGISTER (86A, & 94) SHALL BE ON THE SAME CIRCUIT BREAKER, WITH AN ISOLATED GROUND ORANGE RECEPTACLE.
- ALL CIRCUITRY SHOWN WITHOUT TICKS SHALL HAVE (2) WIRES PLUS AN EQUIPMENT GROUNDING CONDUCTOR.
- ALL INDIVIDUAL BRANCH CIRCUITS SHALL HAVE SEPARATE NEUTRALS TO MEET THE REQUIREMENTS OF 2017 NEC 210.4(B). MULTIWIRE BRANCH CIRCUITS WITH COMMON NEUTRAL SHALL ONLY SERVE SINGLE DEVICE CIRCUITS FROM MULT-POLE BREAKERS.
- TRANSFORMERS SHALL BE MOUNTED ABOVE CEILING AND BELOW TRUSSES WITH LOW VOLTAGE WIRING FEEDING ALL EXTERIOR LIGHTS.
- ALL UNDERGROUND CONDUIT SHALL BE 12" BELOW THE FINISHED FLOOR.



PANDA EXPRESS, INC.
1683 Walnut Grove Ave.
Rosemead, California
91770
Telephone: 626.799.9898
Facsimile: 626.372.8288

All ideas, designs, arrangement and plans indicated or represented by this drawing are the property of Panda Express Inc. and were created for use on this specific project. None of these ideas, designs, arrangements or plans may be used by or disclosed to any person, firm, or corporation without the written permission of Panda Express Inc.

REVISIONS:

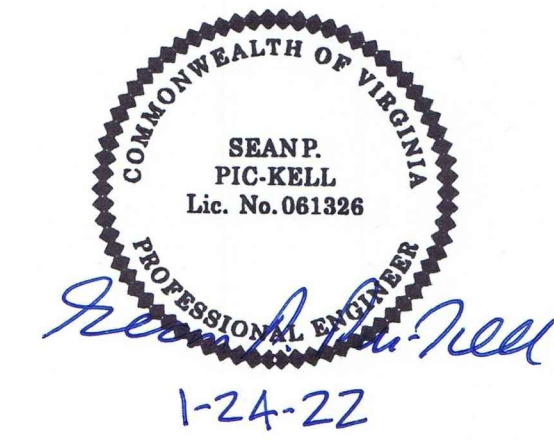
NO.	DESCRIPTION	DATE

ISSUE DATE:

PERMIT / BID SET	DATE

DRAWN BY: G. COLLINS

PANDA PROJECT #: D8159
ARCH PROJECT #: JCDT21-0070



PANDA EXPRESS

TRUE WARM & WELCOME
111 BURGESS RD.
HARRISONBURG, VA 22801

E-100

POWER FLOOR PLAN

TRUE WARM & WELCOME 2500 R2

#	POWER PLAN KEYED NOTES	3
	NOT TO SCALE	E-100

#	POWER PLAN GENERAL NOTES	2
	NOT TO SCALE	E-100

#	POWER FLOOR PLAN	1
	Scale: 1/4"=1'-0"	E-100