

A	TANK WATER CLOSET (HANDICAPPED); AMERICAN STANDARD 2467.016, FLUSH TANK WITH TRIP LEVER ON OPEN SIDE OF TOILET. FLOOR MOUNTED, STANDARD WHITE FINISHED. ELONGATED FRONT BOWL. PRESSURE ASSISTED 1.6 GPF. RIM 16 1/2" A.F.F. AM. STD 4142.600 TANK COVER LOCKING DEVICE AM. STD. 5901.100.020 OPEN FRONT SEAT LESS COVER.
B	LAVATORY: ZURN MODEL Z5344, 20"x18" WALL HUNG LAVATORY, VITREOUS CHINA, WITH 4" CENTER FAUCET HOLES & ZURN Z-1231 CONCEALED ARM CARRIER. FAUCET: TOTO TLE101-D10ET STANDARD ECOPOWER FAUCET. SENSOR, 1.0 GPM, 0.18gpc. 4" COVER PLATE #1TP3158HC.P THERMOSTATIC MIXING VALVE: TOTO TLT10R. PROVIDED & INSTALLED BY CONTRACTOR CONTACT CHRISTINE MCALEXANDER 800-459-7099 PANDARG@HJCINC.COM
C	NOT USED
D	FLOOR DRAIN: ZURN # ZB415-85 CAST IRON DRAIN WITH 5" ROUND POLISHED BRONZE TOP. MEMBRANE FLASHING CLAMP, PROVIDE 3" OUTLET WITH P-TRAP. CLEAN AND POLISH AFTER INSTALLATION. PROVIDE INLINE FLOOR DRAIN TRAP-SEALER MEETING ASSE1072, SURESEAL, MODEL #SS3009V OR EQUIVALENT. INSTALL IN ACCORDANCE WITH MANUFACTURERS RECOMMENDATIONS.
D1	FLOOR DRAIN: ZURN # ZB415-85 CAST IRON DRAIN WITH 5" ROUND POLISHED BRONZE TOP. MEMBRANE FLASHING CLAMP, PROVIDE 3" OUTLET WITH P-TRAP. CLEAN AND POLISH AFTER INSTALLATION. PROVIDE TRAP PRIMER.
E	FLOOR SINK: ZURN # Z1901-31, RECEPTOR WITH 12" SQUARE TOP x 8" DEEP CAST IRON BODY WITH ACID-RESISTING ENAMEL INTERIOR. RECEPTOR PROVIDED WITH ALUMINUM DOME STRAINER WITHOUT GRATE.
E1	FLOOR SINK: ZURN # Z1901-232, RECEPTOR WITH 12" SQUARE TOP x 8" DEEP CAST IRON BODY WITH ACID-RESISTING ENAMEL INTERIOR. RECEPTOR PROVIDED WITH PORCELAIN ENAMEL LOOSE-SET 1/2 GRATE AND ALUMINUM DOME STRAINER.
F	NOT USED
G	FLOOR DRAIN WITH FUNNEL: ZURN # ZB415-AR-4 ACID RESISTING EPOXY COATED CAST IRON DRAIN WITH 5" ROUND POLISHED BRONZE TOP, 4" FUNNEL. PROVIDE 2" OUTLET WITH P-TRAP. CLEAN AND POLISH AFTER INSTALLATION. REFER TO DETAIL. PROVIDE TRAP PRIMER
H	NOT USED
I	GREASE INTERCEPTOR: MCCREARY CONCRETE PRODUCTS, INC. 785-932-3058. 1000 GALLONS, 6" INLET AND OUTLET. TRAFFIC COVER. REFER TO CIVIL DRAWINGS FOR LOCATION. THE DESIGN OF THE GREASE INTERCEPTOR SHALL BE APPROVED BY LOCAL CITY REQUIREMENT.
J	WATER HAMMER ARRESTER: J. R. SMITH #5020, 1" NIPPLE OR EQUAL
K	PROVIDE ZURN 3755T STAINLESS STEEL REDUCED PRESSURE PRINCIPLE ASSEMBLY AT BAG-IN-BOX. REFER TO 15P-500
L	HOSE BIBB: ACORN #8121 WITH VACUUM BREAKER, CHROME PLATED.
L1	HOSE BIBB: WOODFORD MB65 FREEZELESS COMMERCIAL CONCEALED BOX TYPE WALL HYDRANT IN SECURE LOCK STYLE MODULAR BOX. SINGLE CHECK ANTI SIPHON VACUUM BREAKER, CHROME HEAD, BRASS VALVE BODY HYDRANT WITH 3/4" HOSE CONNECTION 18" A.F.F.
M	TRENCH DRAIN: ZURN #Z-286-RFS, 6" WIDE x 80" LONG. TRENCH DRAIN SYSTEM, MODULAR CHANNEL SECTIONS SHALL BE MADE OF HIGH DENSITY POLYETHYLENE WITH INTERLOCK ENDS, A RADIUS BOTTOM AND REINFORCED STAINLESS STEEL SLOTTED GRATE.
N	PROVIDE WATTS SD-3 DUAL CHECK VALVE WITH ATMOSPHERIC PORT AND STRAINER AFTER EACH BV.
O	FREEZE PROOF ROOF HYDRANT: WOODFORD MODEL: SRH-MS
P1	MOP SINK: GSW # SE242FM 24"x24" STAINLESS STEEL UNIT, 18 GA. STAINLESS STEEL, CHICAGO FAUCET #697 WITH INTEGRAL STOPS IN SHANKS, WALL BRACE, HOSE THERADS, PAL HOOK, VACUUM BREAKER, ROUGH BRASS FINISH; THREE FOOT RUBBER HOSE, 3" TRAPPED AND VENTED WATER CONNECTION. PROVIDE 3/4" HW & CW JR. OC. 36" A.F.F. PROVIDE 3/4" CW HOSE BIBB, ACORN #8121 W/ VACUUM BREAKER, 48" A.F.F. FOR CHEMICAL CONNECTION.
P3	TANKLESS GAS WATER HEATER SYSTEM. MFG: RINNAI MTO-002472 (CU199). 398.000 BTU/HR GAS INPUT, 7.7 GPM @ 100° RISE. SEE PIPING DIAGRAM ON SHEET P-400 INCLUDE ALL PIPING, VENTING, WALL MOUNTING BRACKET AND ANY ACCESSORIES NECESSARY TO COMPLETE SYSTEM INSTALL. CONTACT: RICO VIGLIETTI, RINNAI AMERICA CORPORATION CORPORATE ACCOUNTS MANAGER (901) 440-7389 JVGIETTIE@RINNAI.US
CP	HW CIRC. PUMP - MFG: GRUNDFOUS UP 15-1885, 1/25 HP, 115 VOLT, 2 GPM @ 7' HEAD OR APPROVED EQUIVALENT.
RD	R- ROOF DRAIN: J.R. SMITH #1010 CAST IRON ROOF DRAINS WITH FLASHING COLLAR AND CAST IRON DOME. FURNISH EXTENSION (SUFFIX-X) FOR INSULATED ROOFS. SUMP RECEIVER (SUFFIX-R) AND UNDER-DECK CLAMP (SUFFIX-C) FOR ALL BUT POURED-IN-PLACE INSTALLATIONS. OUTLET CONNECTION TYPE SHALL BE COMPATIBLE WITH PIPING SYSTEM. PLUMBER TO PROVIDE AND INSTALL HEAT TAPE, RADIANT SOLUTIONS #JHSF-30-1 ON BOTH DRAINS IN COLD CLIMATES.
OD	OD - OVERFLOW ROOF DRAIN: J.R. SMITH #1070 WITH SAME FEATURES AS DESCRIBED FOR "ROOF DRAINS". STANDPIPES SHALL BE ADJUSTED AND SECURED SO THAT AFTER THE INSTALLATION OF THE DRAIN ASSEMBLY, THE TOP OF THE STANDPIPE SHALL BE (2") ABOVE THE ADJACENT ROOF SURFACE.
40B	FAUCET FOR CHEM: T&S BRASS MODEL #B-0669-POL. PROVIDED BY G.C.

FIXTURE	COLD WATER	HOT WATER	WASTE	VENT
WATER CLOSET (HANDICAPPED)	1/2"	--	4"	2"
LAVATORY	1/2"	1/2"	2"	1 1/2"
2 AND 3 - COMP SINK	1/2"	1/2"	3"	2"
HAND SINK	1/2"	1/2"	2"	1 1/2"
MOP SINK (J.S.)	1/2"	1/2"	3"	2"
EQUIPMENT	1/2"	--	--	--
FLOOR DRAIN/SINK	--	--	2" OR 3"	2"

IN THIS SCHEDULE ARE FURNISHED BY THE OWNER AND INSTALLED BY THE GENERAL CONTRACTOR UNLESS NOTED OTHERWISE AND CONNECTED TO THE PLUMBING UTILITIES BY THE PLUMBING CONTRACTOR, WHO SHALL INSTALL ALL PLUMBING DEVICES FURNISHED WITH EQUIPMENT.

WASTE FS = FLOOR SINK, CFD = CONDENSATE FLOOR DRAIN, BV = VACUUM BREAKER, FLEX = A SIX FOOT COILED LENGTH OF GOOD QUALITY FLEXIBLE REINFORCED PLASTIC TUBING CONNECTED FROM THE ROUGH IN TO THE EQUIPMENT WITH ALL REQUIRED ADAPTERS AND HOSE CLAMPS.

ALL PIPES MUST MAINTAIN A MINIMUM CLEARANCE OF 6" AFF AND MUST BE WELL SUPPORTED NO FLOOR SUPPORTS ALLOWED.

(4A) SERVING COUNTER MOUNTED SODA MACHINE: IF PROVIDED, SODA MACHINE INSTALLER TO PROVIDE DRAIN LINE FROM ICE BIN AND SODA MACHINE TO FS WITH 1" AIR GAP. DRAIN LINE TO BE INSULATED. WATER TO SODA MACHINE TO BE PROVIDED THROUGH BUNDLE FROM FILTER AND RACK IN KITCHEN BY SODA MACHINE INSTALLER.

(4AB) BEVERAGE COUNTER MOUNTED SODA MACHINE WITH ICE MACHINE: PROVIDE 3/4" COPPER PIPE IW FROM COUNTER TROUGH DRAIN TO FS WITH 1" AIR GAP. INSULATE. WATER TO SODA MACHINE TO BE PROVIDED THROUGH BUNDLE FROM FILTER AND RACK IN KITCHEN BY SODA MACHINE INSTALLER. NO LEGS TO BE INSTALLED. MACHINE TO SET DIRECTLY ON COUNTER.

(4F) WATER FILTER: PROVIDE 3/4" CW AT 1" 90° AFF WITH BV. PROVIDE FLEX AND REDUCED PRESSURE STAINLESS STEEL BACKFLOW PREVENTOR, OR OTHER DEVICE AS REQUIRED BY LOCAL CODE. INSTALL OWNER PROVIDED WATER FILTER AND MAKE CONNECTIONS TO BACKFLOW PREVENTOR AND WATER SUPPLY. PROVIDE ALL REQUIRED FITTINGS TO ALLOW SODA MACHINE INSTALLER TO HOOK UP BOOSTER PUMP TAP TO WATER FILTER. REFER TO DETAIL 15P-550.

(6B) 22"D REAR COUNTER WITH HAND SINK, PROVIDE 3/4" CW AND 3/4" HW AT 24" AFF AND 8" OC WITH CHROME-PLATED 1/2 TURN BALL VALVES. CONNECT TO OWNER SUPPLIED FAUCETS WITH METAL FLEX PROVIDE 2" DRAIN PIPE WITH P" TRAP AND WALL MOUNTED CLEAN-OUT. ALL EXPOSED DRAIN PIPES AND FITTINGS TO BE CHROME PLATED, NOT P.V.C.

(9D) ICE TEA MAKER: PROVIDE 3/4" CW @ 24" A.F.F. PROVIDE ALL REQUIRED FITTINGS TO ALLOW ICE TEA INSTALLER TO HOOK UP ONE BV. OTHER BV FOR OTHER EQUIPMENT.

(10J) SODA MACHINE MOUNTED ICE MACHINE. PROVIDE 1/2" CW AT 24" A.F.F. WITH BV. PROVIDE ALL REQUIRED FITTINGS TO ALLOW ICE MACHINE INSTALLER TO HOOK UP ICE MACHINE TO CW.

(20A) CHINESE RANGE: PROVIDE 3/4" CW AT 10" AFF WITH BV. PROVIDE PRESSURE TYPE VB OR OTHER BACKFLOW DEVICE AS REQUIRED BY LOCAL CODE, AND CONNECT TO OWNER SUPPLIED FAUCETS. PROVIDE 2" COPPER PIPE IW TO FS WITH 2" AIR GAP.

(20B) PROVIDE 1/2" GAS SUPPLY AT 8" AFF WITH EASILY ACCESSIBLE SHUT-OFF VALVE. INSTALL OWNER SUPPLIED GAS REGULATOR AND ADJUST GAS LEVEL TO BURNERS.

(20C) CHINESE RANGE: PROVIDE 3/4" CW AT 10" AFF WITH BV. PROVIDE PRESSURE TYPE VB OR OTHER BACKFLOW DEVICE AS REQUIRED BY LOCAL CODE, AND CONNECT TO OWNER SUPPLIED FAUCETS. PROVIDE 2" COPPER PIPE IW TO FS WITH 2" AIR GAP. PROVIDE 1" GAS SUPPLY DOWN TO 9" AFF REDUCE TO 1/2" AT EQUIPMENT CONNECTION WITH EASILY ACCESSIBLE SHUT-OFF VALVE. INSTALL OWNER SUPPLIED GAS REGULATOR AND ADJUST GAS LEVEL TO BURNERS.

(21B) FRYER: PROVIDE 1/2" GAS SUPPLY DOWN TO 14" AFF THEN TRANSITION TO 1" WITH 90° ANGLE AND SHUT OFF VALVE. PROVIDE ALL REQUIRED FITTINGS AND INSTALLS OWNER SUPPLIED QUICK DISCONNECT FLEXIBLE PIPE AND CONNECT TO UNITS WITH 90° ANGLE. SEE DETAIL ON P-500

(23E) GRIDOLE: PROVIDE 3/4" GAS SUPPLY DOWN TO 20" AFF WITH EASILY ACCESSIBLE SHUT-OFF VALVE. PROVIDE ALL REQUIRED FITTINGS. CONNECT TO UNIT WITH OWNER SUPPLIED QUICK DISCONNECT (3/4"x48", 1) SWIVEL KIT)

(25A) RICE COOKER: PROVIDE 3/4" GAS SUPPLY AT 30" AND 3/4" GAS SUPPLY AT 10" AFF WITH SHUT OFF VALVES. ONE FOR EACH UNIT. PROVIDE ALL REQUIRED FITTINGS AND INSTALL OWNER SUPPLIED QUICK DISCONNECT FLEXIBLE PIPE AND CONNECT TO UNITS.

(31) WALK-IN COOLER: PROVIDE 1" COPPER PIPE IW FROM DRAIN PAN ON EACH UNIT TO FLOOR DRAIN WITH P" TRAP AND 1" AIR GAP. MOUNT ALL PIPES WITHIN WALK-IN BOX WITH 1" HOLD-OFF SUPPORTS.

(32) WALK-IN FREEZER: PROVIDE 1" COPPER PIPE IW FROM DRAIN PAN ON EACH UNIT TO FLOOR DRAIN WITH P" TRAP AND 1" AIR GAP. MOUNT ALL PIPES WITHIN WALK-IN BOX WITH 1" HOLD-OFF SUPPORTS. PROVIDE HEAT TRACE REFER TO ELECTRICAL DRAWING.

(40A) POT SINK: PROVIDE 3/4" CW AND 3/4" HW AT 14" AFF AND 8" OC WITH BVS & CW. CONNECT TO OWNER SUPPLIED FAUCET WITH COPPER PIPING. PROVIDE 2" COPPER PIPE IW (MANIFOLD ALL COMPARTMENT DRAINS INTO ONE LINE) TO FS WITH 2" AIR GAP. OR, IF REQUIRED BY LOCAL CODE, INSTALL 2" COPPER PIPE DIRECTLY TO SEWER SYSTEM. INSTALL OWNER SUPPLIED LEVER DRAIN STOPS. SEE DETAIL ON SHEET P-500.

(41B) SINGLE BOWL PREP SINK: PROVIDE 3/4" CW AND 3/4" HW AT 14" AFF AND 8" OC WITH BV. CONNECT TO OWNER SUPPLIED FAUCETS WITH COPPER PIPING. PROVIDE 2" COPPER PIPE IW TO FS WITH 2" AIR GAP. OR, IF REQUIRED BY LOCAL CODE, INSTALL 2" COPPER PIPE DIRECTLY TO SEWER SYSTEM.

(41C) 2" COPPER PIPE DIRECTLY TO SEWER SYSTEM. INSTALL OWNER SUPPLIED LEVER DRAIN STOPS.

(45A) HAND SINK. PROVIDE 3/4" CW AND 3/4" HW AT 24" AFF AND 8" OC WITH CHROME-PLATED 1/2 TURN BALL VALVES. CONNECT TO OWNER SUPPLIED FAUCETS WITH METAL FLEX PIPING. PROVIDE 2" DRAIN PIPE WITH P" TRAP AND WALL MOUNTED CLEAN-OUT. ALL EXPOSED DRAIN PIPES AND FITTINGS TO BE CHROME PLATED, NOT P.V.C.

SERVICE	UNDERGROUND	ABOVE GROUND
COLD & HOT WATER	TYPE "K" OR "L" HARD DRAWN COPPER TUBE	PEX
SANITARY WASTE	*SCH. 40 PVC	*SCH. 40 PVC
SANITARY VENT	*SCH. 40 PVC	*SCH. 40 PVC
GAS	_____	BLACK STEEL, SCHEDULE 40
INDIRECT DRAIN	_____	HARD DRAWN COPPER TUBE TYPE "M"

*SCH. 40 PVC IS PREFERRED IF APPROVED BY AUTHORITY HAVING JURISDICTION.
PROVIDE SCHEDULE 40 PVC FOR ALL WASTE VENT PIPING & FITTINGS.

1. SODA CONDUIT: PROVIDE 6" PVC CONDUIT BELOW FLOOR FROM THE SIDE OF SODA STORAGE RACK TO SODA DISPENSER PER DETAIL #4 ON SHEET P-500.
2. CONDENSATE: ROUTE SHARED CONDENSATE LINE THROUGH WALK-IN COOLER. DO NOT RUN THROUGH WALK-IN FREEZER. PROVIDE 1" INSULATED CONDENSATE DRAIN PIPE FROM THE EVAPORATOR COIL DISCHARGE TO FLOOR SINK OR MOP SINK WITH AIR GAP OF 1/2" PIPE DIAMETER. INSTALL AT MINIMUM 76" HEIGHT A.F.F. REFER TO DETAIL #2 ON SHEET P-500.
3. PROVIDE TRAP PRIMER FOR FLOOR SINK. SEE DETAIL 17P-500.
4. RDL & ODL LINES DN. IN WALL. TERMINATE ODL THRU WALL AS CLOSE TO BOTTOM PLATE AS POSSIBLE. INSTALL 1/2" PAST EDR. WATER PROOF SEAL ALL AROUND. TERMINATE RDL & ODL WITH 4" PVC LAMBS TONGUE NOZZLE, COLOR ANTIQUE BRONZE, ARKMMAN MODEL #PDN-4. (IF AVAILABLE TIE RD TO STORM SEWER UNDERGROUND)
5. COMBINATION WASTE/VENT
6. LAV. TAILPIPE WITH TRAP PRIMER, RUN 1/2" CW BELOW FLOOR TO FLOOR DRAIN. SEE DETAIL #9 ON PLAN P-500.
7. (AAV) STUDOR MIN-VENT AIR ADMITTANCE VALVE- INSTALL PER MANUFACTURERS INSTALLATION INSTRUCTIONS.

ITEM	FIXTURE	QTY	WATER FU		SEWER FU	
			EACH	TOTAL	EACH	TOTAL
(A)	WATER CLOSET	2	5	10	4	8
(B)	LAVATORY	2	2	4	1	2
(D, D1)	FLOOR DRAIN 3" TRAP	6	—	—	5	30
(E, E1)	FLOOR SINK 3" TRAP	9	—	—	5	45
(P1)	MOP SINK	1	3	3	2	2
(G)	FLOOR DRAIN W/ FUNNEL 2" TRAP	1	—	—	3	3
(L, L1)	HOSE BIBB	3	4	12	—	—
(M)	TRENCH DRAIN 3" TRAP	1	—	—	5	5
(4F)	FILTER SYSTEM	1	1	1	FS	—
(9D)	ICE TEA BREWER	2	1	2	FS	—
(10J)	400 LB ICE MACHINE	2	1	2	FS	—
(20A)	CHINESE RANGE	1	2	2	FS	—
(20Q)	CHINESE RANGE	1	2	2	FS	—
(40A) (40B)	POT SINK (3.COMP.)	1	4	4	FS	—
(41B) (41C)	PREP. SINK (1.COMP.)	2	4	8	FS	—
(45A) (6B)	HAND SINK (WALL MOUNT)	3	2	6	1	3
TOTAL			54		98	

SERVICE	TOTAL F.U.
DOMESTIC WATER	54
SANITARY SEWER	98

SERVICE	SIZE MAIN	CAPACITY	
DOMESTIC WATER	1-1/2 INCH	32	GPM
SANITARY SEWER	4 INCH	98	F.U.
FUEL GAS	3 INCH	2586	CFH
FIRE PROTECTION	INCH		GPM

PIPE SIZE	GPM	VELOCITY FT/SEC	FIXTURE UNITS	
			F - TANK	F - VALVE
1/2"	2.5	3.5	2 F.U. @ psi 6.0	F.U. @ psi
3/4"	6.6	4.4	8 F.U. @ psi	F.U. @ psi
1"	13.4	5.2	19 F.U. @ psi	F.U. @ psi
1-1/4"	23.3	5.9	37 F.U. @ psi	6 F.U. @ psi
1-1/2"	36.7	6.6	74 F.U. @ psi	13 F.U. @ psi
2"	76.4	7.9	254 F.U. @ psi	232 F.U. @ psi

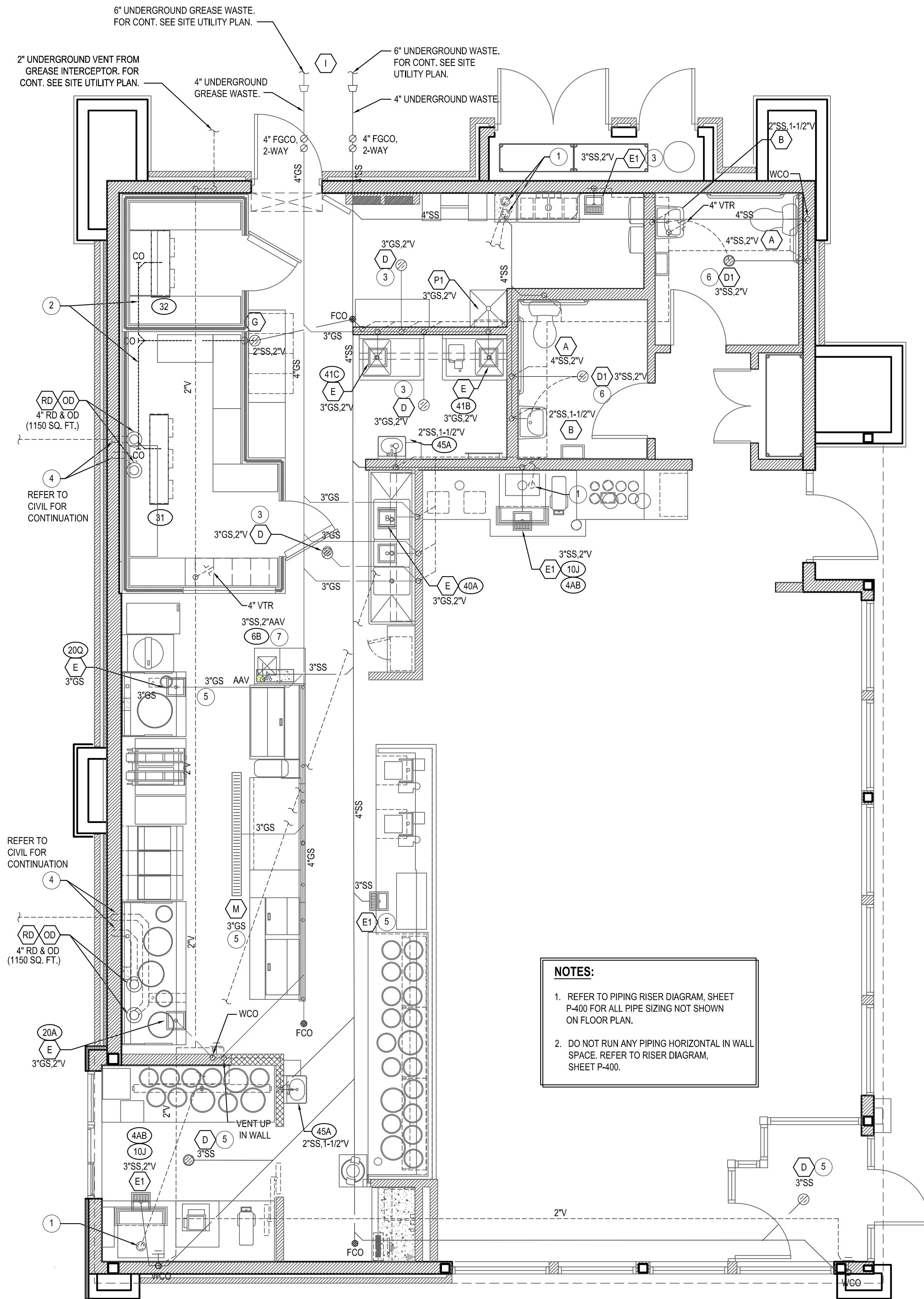
* DOMESTIC WATER BACKFLOW PREVENTER MODEL: "WILKINS"975XL SIZE 1-1/2"
** PRESSURE REGULATING VALVE MODEL: N/A SIZE N/A

PIPE SIZE	GPM	VELOCITY FT/SEC	FIXTURE UNITS	
			F - TANK	F - VALVE
1/2"	2.5	3.5	2 F.U. @ psi	F.U. @ psi
3/4"	6.6	4.4	8 F.U. @ psi	F.U. @ psi
1"	13.2	5.0	19 F.U. @ psi	F.U. @ psi
1-1/4"	19.0	5.0	37 F.U. @ psi	6 F.U. @ psi

FIXTURE	QTY.	FU	FU TOTAL
FLOOR DRAIN/FLOOR SINK 3" TRAP	8	5	40
TRENCH DRAIN 3" TRAP	1	5	5
MOP SINK	1	2	2
TOTAL			47 (24 CPM)

FLOW THROUGH TYPE GREASE INTERCEPTOR MINIMUM SIZE WILL BE 50 POUND GREASE CAPACITY PER IPC, TABLE 1003.34.1.

GRAVITY TYPE GREASE INTERCEPTOR SIZE BASED ON 24 GPM WITH 30 MINUTE RETENTION TIME ($24 \times 30 = 720$) TO BE SIZED AT 1000 GALLONS.



1

Scale: 1/4"=1'-0"

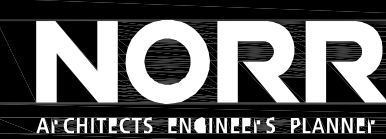
P-101



All ideas, designs, arrangement and plans indicated or represented by this drawing are the property of Panda Express Inc. and were created for use on this specific project. None of these ideas, designs, arrangements or plans may be used by or disclosed to any person, firm, or corporation without the written permission of Panda Express Inc.

ISSUE DATE:	
STATE PERMIT	06.07.21

PANDA PROJECT #: D8060
ARCH PROJECT #: JCDT20-0240



TRUE WARM & WELCOME
390 W Spring Mill Pointe Dr.
Westfield, IN, ZIP 46074

P-101

WASTE & VENT PLAN

TRUE WARM & WELCOME 2300 R5