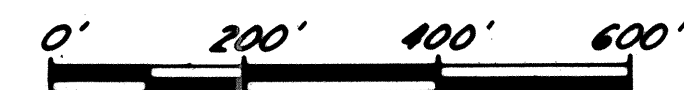


PARCEL MAP 3672

CITY OF FREMONT
ALAMEDA COUNTY, CALIFORNIA

Scale: 1" = 200'

September, 1981



CURVE DATA

No.	Delta	Radius	Length
1	9°04'07"	200.00'	31.66'
2	9°04'07"	200.00'	31.66'
3	29°44'11"	55.00'	22.79'
4	85°28'50"	75.00'	115.82'
5	92°21'55"	40.00'	64.45'

BASIS OF BEARINGS

The bearing N. 20° 36' 32" W. of the monument line of Kato Road as shown on the map of Parcel Map No. 1594, recorded in Book 57 of Maps at pages 55 to 62, Alameda County Records, was taken as the basis of bearings for this map.

SOILS NOTE

A soils report was prepared for this subdivision by the firm of Peter Kaldveer and Associates, dated February 1979 and entitled "Feasibility Foundation Investigation for Nimitz Industrial Park, Fremont, California."

NOTE AND LEGEND

The heavy broken line indicates the boundary of land subdivided by this map. The area within the heavy broken line is 51.849± acres. All distances and dimensions are shown in feet and decimals thereof.

- Indicates a Standard City Monument found
- Indicates a 1/4" Iron Pipe found
- Indicates a 1/4" Iron Pipe to be set
- P.U.E. Indicates Public Utility Easement
- L.E. Indicates Landscape Easement
- S.E. Indicates Slope Easement
- U.S.D. Indicates Union Sanitary District
- A.C.F.C. Indicates Alameda County Flood Control
- W.C.D. Water Conservation District

BUILDING SETBACK LINE

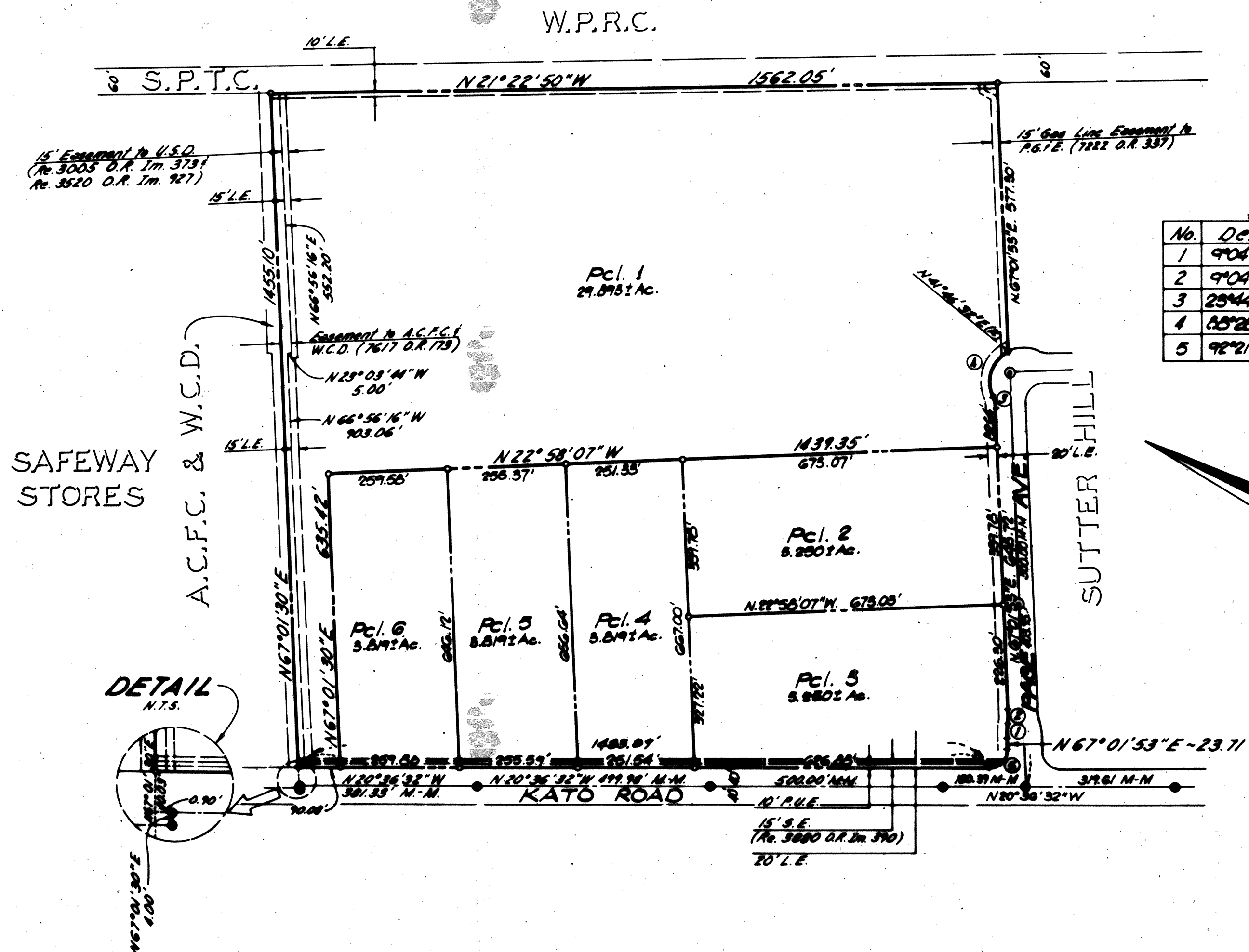
To be per City of Fremont Zoning Ordinance.

MARK THOMAS & CO. INC.

Consulting Civil Engineers & Municipal
Planners

San Jose

California



PM 3672

133/50